



Reference Architecture Deployment Guide

SAP HANA Solution on SmartStack



Document Revision

Date	Revision	Description
5/5/2015	1.0	Initial release

THIS GUIDE IS FOR INFORMATIONAL PURPOSES ONLY, AND MAY CONTAIN TYPOGRAPHICAL ERRORS AND TECHNICAL INACCURACIES. THE CONTENT IS PROVIDED AS IS, WITHOUT EXPRESS OR IMPLIED WARRANTIES OF ANY KIND.

Nimble Storage: All rights reserved. Reproduction of this material in any manner whatsoever without the express written permission of Nimble Storage is strictly prohibited.

Table of Contents

OVERVIEW	7
AUDIENCE	7
ASSUMPTIONS.....	7
LIMITATIONS AND OTHER CONSIDERATIONS	7
NIMBLE STORAGE ADAPTIVE FLASH PLATFORM	8
CASL	8
CS-SERIES ARRAY	8
INFO SIGHT.....	9
CISCO UCS SOLUTION	10
CISCO UCS B260 M4 BLADE SERVER	11
CISCO UCS 6200 FABRIC INTERCONNECT.....	11
CISCO NEXUS SWITCHES.....	12
CISCO UCS MANAGER.....	12
BEST PRACTICES FOR SAP HANA TAILORED DATACENTER INTEGRATION	13
PHYSICAL COMPUTE NODES.....	13
VIRTUAL COMPUTE NODES WITH VMWARE.....	14
NETWORK	15
SHARED STORAGE /HANA/SHARED.....	15
OPERATING SYSTEM	15
SAP HANA STORAGE CONNECTOR.....	15
FILE SYSTEM	16
ARCHITECTURE OVERVIEW	16
DEPLOYMENT	18
CUSTOMER SWITCH (CISCO NEXUS)	18
CISCO NEXUS FIBRE CHANNEL	19
ZONING	19
UCS SETUP – CHASSIS LINKS.....	19
UCS SETUP – POWER POLICY.....	20
UCS SETUP – SWITCHING MODE	20
UCS SETUP – UNIFIED PORTS	21
UCS SETUP – VLANS.....	21
UCS SETUP – VSANS.....	22
UCS SETUP – NETWORK CONTROL POLICY	23
UCS SETUP – MAC POOLS.....	24
UCS SETUP – VNIC TEMPLATES	24
UCS SETUP – WWNN POOL.....	25
UCS SETUP – WWPN POOL FABRIC A.....	26
UCS SETUP – WWPN POOL FABRIC B	26
UCS SETUP – VHBA TEMPLATES	27
UCS SETUP – ETHERNET ADAPTER POLICY.....	28
UCS SETUP – BIOS POLICY	29
UCS SETUP – BOOT POLICY	31
UCS SETUP – DEFAULT HOST FIRMWARE PACKAGE.....	32
UCS SETUP – IPMI USER.....	33
UCS SETUP – MAINTENANCE POLICY.....	33
UCS SETUP – POWER CONTROL POLICY	33
UCS SETUP – SERIAL OVER LAN POLICY.....	34

UCS SETUP – UUID POOL	34
UCS SETUP – SERVICE PROFILE TEMPLATE.....	35
UCS SETUP – SERVICE PROFILES	40
NIMBLE STORAGE – STORAGE SETUP	41
NIMBLE STORAGE – NETWORK CONFIGURATION.....	41
NIMBLE STORAGE – INITIATOR GROUPS AND USED WWPNS	42
NIMBLE STORAGE – VOLUMES	43
OS INSTALLATION	44
OS CONFIGURATION	44
MULTIPATHING	45
HANA FOLDERS	46
SUMMARY	48
APPENDIX A – VSAN DATABASE CONFIGURATION.....	49
APPENDIX B – OS CONFIGURATION	52

List of Figures

- Figure 1 – Nimble Storage CS-Series Array9
- Figure 2 – UCS Portfolio.....10
- Figure 3 – SAP HANA DataMart and BWoH.....13
- Figure 4 – SAP HANA SoH14
- Figure 5 – VMware Overview14
- Figure 6 – Architectural Overview16
- Figure 7 – Nimble CS-Series Specifications17
- Figure 8 – Customer Network.....18
- Figure 9 – Storage Network.....19
- Figure 10 – Global Policies.....20
- Figure 11 – Switching Mode20
- Figure 12 – Port Configuration - Ethernet / FC.....21
- Figure 13 – VLAN Configuration.....21
- Figure 14 – Client Zone VLAN.....21
- Figure 15 – Client Zone Port Channel.....22
- Figure 16 – Internal Zone VLAN.....22
- Figure 17 – Internal Zone Port Channel22
- Figure 18 – VSAN A23
- Figure 19 – VSAN B23
- Figure 20 – Network Control Policy23
- Figure 21 – VLAN MAC Pool.....24
- Figure 22 – VLAN MAC Pool Blocks24
- Figure 23 – Client vNIC Template24
- Figure 24 – Internal vNIC Template25
- Figure 25 – Storage vNIC Template.....25
- Figure 26 – WWNN Pool26
- Figure 27 – WWN Pool Blocks26
- Figure 28 – VSAN A WWPN Pool26
- Figure 29 – VSAN A WWN Pool Blocks.....26
- Figure 30 – VSAN B WWPN Pool27
- Figure 31 – VSAN B WWN Pool Blocks.....27
- Figure 32 – vHBA - Fabric A.....27
- Figure 33 – vHBA - Fabric B.....28
- Figure 34 – Ethernet Adapter Settings28
- Figure 35 – Ethernet Adapter Options.....29
- Figure 36 – BIOS Policy29
- Figure 37 – BIOS Policy – Advanced30
- Figure 38 – BIOS Policy – RAS.....31
- Figure 39 – BIOS Policy – Serial.....31
- Figure 40 – BIOS Policy – Server.....31
- Figure 41 – Boot Policy32
- Figure 42 – Boot Interface Ordering.....32
- Figure 43 – UCS Host Firmware33
- Figure 44 – IPMI User.....33
- Figure 45 – Maintenance Policy33
- Figure 46 – Power Control Policy.....34
- Figure 47 – LAN Policy34
- Figure 48 – UUID Pool.....34
- Figure 49 – UUID Pool Blocks.....35
- Figure 50 – Service Profile Template35
- Figure 51 – Service Profile – Storage.....36
- Figure 52 – Service Profile – Create WWNN36
- Figure 53 – Service Profile – Network37
- Figure 54 – Service Profile – vNIC/vHBA.....37
- Figure 55 – Service Profile – vMedia.....37

Figure 56 – Service Profile – Boot Order.....	38
Figure 57 – Service Profile – Policies.....	38
Figure 58 – Service Profile – Policies (cont)	39
Figure 59 – SOL Policy.....	39
Figure 60 – Management IP	40
Figure 61 – Service Profile Assignment	40
Figure 62 – Nimble Management Network Setup	41
Figure 63 – Management Subnet Assignment	41
Figure 64 – Management Port Assignment.....	42
Figure 65 – Nimble Support Interfaces.....	42
Figure 66 – Host Initiator Groups	42
Figure 67 – VSAN A – Nimble WWN Initiators.....	43
Figure 68 – VSAN B – Nimble WWN Initiators.....	43
Figure 69 – Initiator Group – Volume Assignment	43
Figure 70 – Nimble Storage Boot Volumes	44
Figure 71 – Generate ssh Keys.....	45
Figure 72 - Multipathing Setup	46
Figure 73 – Mount NFS Share.....	47
Figure 74 – Configure fstab	47

Overview

The Nimble Storage SmartStack is an example of an integrated infrastructure, building upon the basic components of storage, network, compute and operating system. Once the basic environment is assembled, the platform can then be used for specific solutions such as SAP HANA.

The Best Practices section describes the SAP HANA specific topics for an architecture setup with SmartStack.

The Deployment section describes the SAP HANA specific topics with Nimble Storage using examples and recommendations necessary to meet Tailored Datacenter Integration (TDI) KPI (Key Performance Indicators) requirements.

Audience

This guide was developed to support customers and systems integrators. The goal is to help them understand the basic setup and recommended configuration of a SAP HANA environment and its features on SmartStack.

Assumptions

- General knowledge of Cisco UCS and UCSM – this is not a tutorial on how to set up UCS environments.
- General knowledge of Nimble Storage CS-series arrays
- General knowledge of network design for both Ethernet and FC
- General knowledge of Unix based operating systems
- General knowledge of SAP HANA

Limitations and Other Considerations

Since this is not intended as a step by step setup guide, some configuration details may be missing (e. g., changing default choices and simple click through steps). If you find trouble in applying the content of this guide, please contact Nimble Storage or follow the referenced white papers, SAP notes and links.

Nimble Storage Adaptive Flash Platform

The Nimble Storage Adaptive Flash platform addresses the storage resource needs to meet the growing demands of business-critical applications. It is the first storage solution to eliminate the flash-memory performance and capacity trade-off.

CASL

Adaptive Flash combines Nimble Storage Cache Accelerated Sequential Layout (CASL) architecture and Nimble Storage InfoSight, the company's innovated data sciences–based approach to the storage lifecycle. Nimble Storage CASL scales performance and capacity transparently and independently. Nimble Storage InfoSight uses the power of deep data analytics to provide customers with precise guidance on the optimal approach to scaling flash memory, CPU, and capacity to meet changing application needs, while helping ensure peak storage health.

Nimble Storage Adaptive Flash offers these main benefits:

- Scale storage performance and capacity independently and non-disruptively.
- Achieve enterprise-class flash storage performance and capacity in a small footprint.
- Protect your IT investment by eliminating the need for major system upgrades.
- Sustain peak health for your storage infrastructure with integrated protection, deep-data analytics, and efficient resiliency.

CS-Series Array

The Nimble Storage CS500 and CS700 storage arrays with Fibre Channel connectivity have been certified for SAP HANA TDI (Tailored Datacenter Integration) infrastructure systems. Refer to SAP HANA Product Availability Matrix (PAM: <http://global.sap.com/community/ebook/2014-09-02-hana-hardware/enEN/enterprise-storage.html>) for updates.

As part of the Nimble Storage Adaptive Flash platform, the Nimble Storage CS-Series combination pictured below is well suited for the workloads required to support an SAP HANA solution.

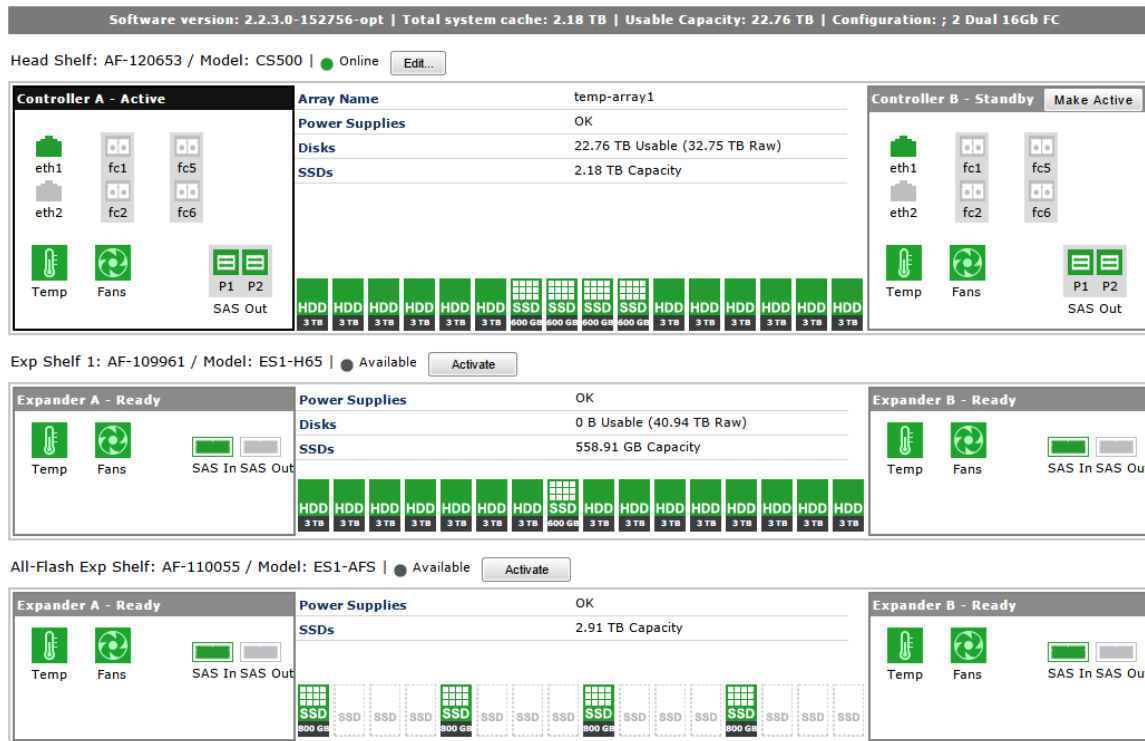


Figure 1 – Nimble Storage CS-Series Array

The Nimble Storage CS-Series array offers the following benefits:

- Adaptive performance: Performance adapts to I/O spikes because the flash cache is populated dynamically.
- Cost-effective capacity: Inline compression, high-capacity disk, and zero-copy cloning deliver capacity reductions of up to 75 percent.
- Business continuity: High availability and integrated data protection reduce downtime from local failures and larger site wide disasters.
- Transparent scaling: Easily scale performance and capacity independently and without downtime.

Nimble Storage CS-Series Volume Monitoring

The capability to easily monitor volume activity is crucial to assessing current storage use, compression rates, connectivity, and performance. Nimble Storage allows the administrator many ways to view, modify, and monitor volume performance and use.

The Nimble Storage GUI and command-line interface (CLI) give administrators the tools and views they need to quickly and accurately perform volume tasks. Volume size, maintenance processes, snapshots, compression, and connectivity can all be viewed and controlled by both the GUI and CLI

InfoSight

Nimble Storage InfoSight takes a new approach to the storage lifecycle, using the power of deep-data analytics and cloud-based management to deliver true operational efficiency across all storage activities.

InfoSight, an integral part of the Nimble Storage Adaptive Flash platform, helps ensure the peak health of storage infrastructure by identifying problems and offering solutions in real time. InfoSight provides expert guidance to help organizations deploy the right balance of storage resources—dynamically and intelligently—to meet the changing demands of business-critical applications.

Cisco UCS Solution

The next evolution in IT is happening now, and Cisco's Unified Computing System (UCS) is ready to power your data center in the Internet of Everything. Cisco UCS is a groundbreaking approach to computing, designed for IT innovation and business acceleration. With Cisco UCS, you can tune your environment to support the unique needs of each application while powering all your server workloads on a centrally managed, highly scalable system.

With Cisco UCS, the Cisco Unified Computing System™ (Cisco UCS) you have a combined compute and network platform designed for the data center. Along with Nimble Storage, this solution delivers servers, storage, and 10 Gigabit networking in an easy-to-deploy, compact form factor. The picture below shows the depth and breadth of the UCS components available.

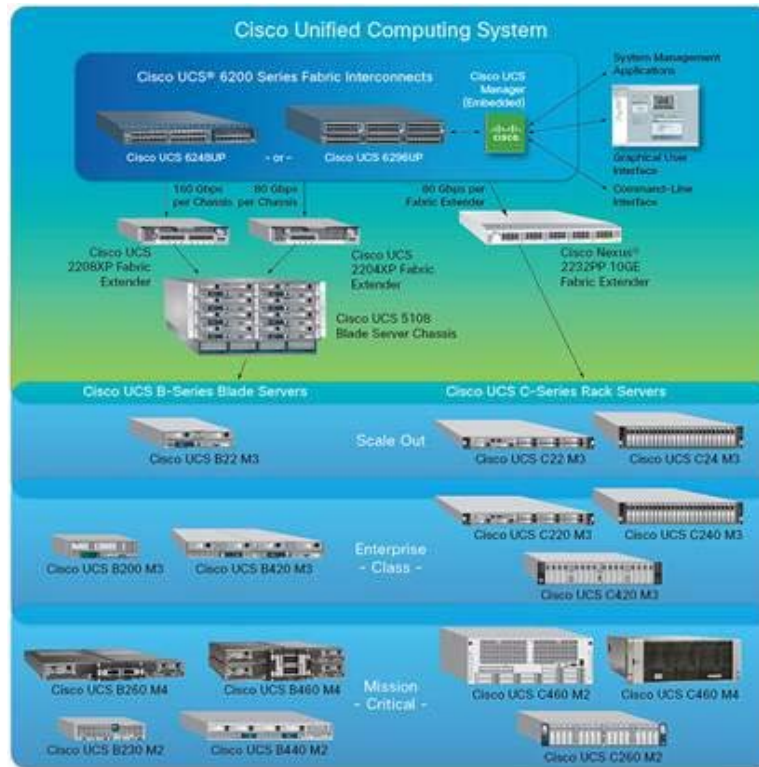


Figure 2 – UCS Portfolio

The SAP HANA solution includes these components:

- Cisco UCS B260 M4 Blade Server: Delivering performance, versatility, and density without compromise, the Cisco UCS B260 M4 Blade Server addresses a broad set of workloads.

- Cisco UCS 5108 Blade Server Chassis: The chassis can accommodate up to four double-width Cisco UCS B260 M4 Blade Servers.
- Cisco UCS 6200 Fabric Interconnect: The Cisco UCS 6200 provides the unified server and networking capabilities for top-of-rack (ToR) management.
- Cisco UCS Manager: Cisco UCS Manager provides unified, embedded management of all software and hardware components in a Cisco UCS solution.
- Cisco Nexus Switches: Cisco Nexus switches are designed to meet the stringent requirements of the next-generation data center.

Cisco UCS B260 M4 Blade Server

Delivering performance, versatility, and density without compromise, the Cisco UCS B260 M4 Blade Server addresses a broad set of workloads, from IT and web infrastructure to distributed databases.

View the video data sheet to see how to boost density and performance without compromise using Cisco's new blade server. <http://www.cisco.com/c/en/us/products/servers-unified-computing/ucs-b260-m4-blade-server/index.html>

The enterprise-class Cisco UCS B260 M4 further extends the capabilities of the Cisco UCS portfolio in a double-width blade form factor. The Cisco UCS B260 M4 server harnesses the power of the Intel Xeon processor E7-2800 v2, E7-4800 v2 and E7-8800 v2 product families.

In addition, Cisco UCS has the architectural advantage of not having to power and cool switches in each blade chassis. Having a larger power budget available for blades enables Cisco to design uncompromised expandability and capabilities in its blade servers, as evidenced by the new Cisco UCS B260 M4 and its leading memory and drive capacities, resulting in outstanding performance.

The Cisco UCS 5108 Blade Server Chassis can house up to four Cisco UCS B260 M4 Blade Servers.

Cisco UCS 6200 Fabric Interconnect

The Cisco UCS 6200 Fabric Interconnect (FI) provides the management, LAN, and storage connectivity for the Cisco UCS 5108 Blade Server Chassis and direct-connect rack-mount servers. It provides the full-featured Cisco UCS management capabilities and XML API as the full-scale Cisco UCS solution in addition to integrating with Cisco UCS Central Software and Cisco UCS Director.

From a networking perspective, the Cisco UCS 6200 Fabric Interconnect uses a cut-through architecture, supporting deterministic, low-latency, line-rate 10 Gigabit Ethernet on all ports, switching capacity of up to 500 Gbps, and 80-Gbps uplink bandwidth for each chassis, independent of packet size and enabled services. The product family supports Cisco® low-latency, lossless 10 Gigabit Ethernet unified network fabric capabilities, which increase the reliability, efficiency, and scalability of Ethernet networks. The Fabric Interconnect supports multiple traffic classes over a lossless Ethernet fabric, from the blade through the fabric interconnect. Significant savings in total cost of ownership (TCO) can be achieved from

the Fibre Channel over Ethernet (FCoE)–optimized server design, in which network interface cards (NICs), host bus adapters (HBAs), cables, and switches can be consolidated.

The Cisco UCS 6200 Fabric Interconnect is built to consolidate LAN and storage traffic onto a single unified fabric, eliminating the capital expenditures (CapEx) and operating expenses (OpEx) associated with multiple parallel networks, different types of adapter cards, switching infrastructure, and cabling within racks. The unified ports allow the fabric interconnect to support direct connections from Cisco UCS to Fibre Channel, FCoE, and Small Computer System Interface over IP (iSCSI) storage devices.

For virtualized environments, the Cisco UCS 6200 Fabric Interconnect supports Cisco virtualization-aware networking and Cisco Data Center Virtual Machine Fabric Extender (VM-FEX) architecture. Cisco Data Center VM-FEX allows the Fabric Interconnects to provide policy-based virtual machine connectivity, with network properties moving with the virtual machine and a consistent operational model for both physical and virtual environments.

The Cisco UCS 6200 Fabric Interconnect is a 10 Gigabit Ethernet, FCoE, and Fibre Channel switch offering up to 500-Gbps throughput and up to four unified ports and one scalability port.

Cisco UCS Manager

The Cisco UCS 6200 Fabric Interconnect hosts and runs Cisco UCS Manager in a highly available configuration, enabling the fabric interconnects to fully manage all Cisco UCS elements. The Cisco UCS 6200 Fabric Interconnects supports out-of-band management through a dedicated 10/100/1000-Mbps Ethernet management port. Cisco UCS Manager typically is deployed in a clustered active-passive configuration on two Cisco UCS 6200 Fabric Interconnects connected through the cluster interconnects built into the chassis.

Cisco Nexus Switches

Unified Fabric is a holistic network architecture comprising switching, security, and services that is designed for physical, virtual, and cloud environments. It uniquely integrates with servers, storage, and orchestration platforms for more efficient operations and greater scalability.

The Cisco Nexus 9000 Series delivers proven high performance and density, low latency, and exceptional power efficiency in a broad range of compact form factors. Operating in Cisco NX-OS Software mode or in Application Centric Infrastructure (ACI) mode, these switches are ideal for traditional or fully automated data center deployments.

Cisco Nexus 7000 Series Switches create the network foundation for your next-generation Unified Fabric data center and campus core. Modular switches, including the Cisco Nexus 7000 and 7700 Series, deliver a comprehensive Cisco NX-OS feature set and open source programmable tools for software-defined network (SDN) deployments. They offer high-density 10, 40, and 100 Gigabit Ethernet with application awareness and performance analytics

Cisco Nexus 5000 Series Switches are designed to deliver high-density top-of-rack (ToR) Layer 2 and Layer 3, 10/40 Gigabit Ethernet with unified ports in compact one-, two-, and four-rack-unit form factors. The Cisco Nexus 5000 Series includes the Cisco Nexus 5500 and 5600 platforms as part of the Cisco Unified Fabric portfolio.

The comprehensive Cisco NX-OS feature set and 10/40 Gigabit Ethernet scalability of the Cisco Nexus 5000 Series deliver high performance, operational efficiency, and design flexibility.


Best Practices for SAP HANA Tailored Datacenter Integration

With the successful certification of the Nimble Storage for SAP HANA TDI the CS-Series can be combined with any SAP HANA TDI certified server, virtualization software, operating system or network component. Links to the Product Availability Matrix (PAM: <http://global.sap.com/community/ebook/2014-09-02-hana-hardware/enEN/appliances.html>) and additional notes will be referenced in the following chapters.

This guide is based on the practical experience and resulting recommendations while setting up a reference landscape using the whitepaper “SAP HANA on Cisco UCS Installation Options” (see link http://www.cisco.com/c/en/us/solutions/collateral/data-center-virtualization/sap-applications-on-cisco-ucs/whitepaper_c11-733582.pdf).

Physical Compute Nodes


The Nimble Storage can be combined with any SAP HANA TDI certified compute nodes following the restrictions on the use of CPU and RAM.

SAP HANA DataMart and BWoH optimized hardware configurations													
SAP HANA scale up sizes	System requirements for the listed system sizes:												
		<ul style="list-style-type: none"> DIMM setting: homogenous symmetric assembly of DIMMs and maximum utilization of all available memory channels Supported CPU's are Ivybridge EX 2880, 4880, 8880, or Ivybridge EX 2890, 4890, 8890 Storage requirements (the storage media itself needs to be protected from failures): <ul style="list-style-type: none"> Log volume 1/2 of the RAM size for systems ≤ 256 GB RAM and min. 1/2 TB for systems ≥ 512GB Data volume 3x RAM HANA share 1x RAM 											
	128 GB	256 GB	384 GB	512 GB	768 GB	1 TB	1.5 TB	2 TB	3 TB	4 TB	6 TB	8 TB	12 TB
2x Ivybridge EX CPU's	X	X	X	X	--	--	--	--	--	--	--	--	--
4x Ivybridge EX CPU's	X	X	X	X	X	X	--	--	--	--	--	--	--
8x Ivybridge EX CPU's	X	X	X	X	X	X	X	X	--	--	--	--	--
SAP HANA scale out sizes													
2x Ivybridge EX CPU's	--	--	--	X*	--	--	--	--	--	--	--	--	--
4x Ivybridge EX CPU's	--	--	--	X		X	--	--	--	--	--	--	--
8x Ivybridge EX CPU's	--	--	--	--	--	X		X	--	--	--	--	--

* 4 nodes max.

Figure 3 – SAP HANA DataMart and BWoH

** Source: “SAP HANA Hardware platform based on IvyBridge EX” from SAP AG (July 2014)

SAP HANA SoH optimized hardware configurations													
SAP HANA scale up sizes	System requirements for the listed system sizes: <ul style="list-style-type: none"> • DIMM setting: homogenous symmetric assembly of DIMMs and maximum utilization of all available memory channels • Supported CPU's are Ivybridge EX 2880, 4880, 8880, or Ivybridge EX 2890, 4890, 8890 • Storage requirements (the storage media itself needs to be protected from failures): <ul style="list-style-type: none"> – Log volume 1/3 of the RAM size for systems ≤ 256 GB RAM and min. 1/2 TB for systems ≥ 512GB – Data volume 3x RAM – HANA share 1x RAM 												
	128 GB	256 GB	384 GB	512 GB	768 GB	1 TB	1.5 TB	2 TB	3 TB	4 TB	6 TB	8 TB	12 TB
2x Ivybridge EX CPU's	X	X	X	X	X	X	X	--	--	--	--	--	--
4x Ivybridge EX CPU's	X	X	X	X	X	X	X	X	X	--	--	--	--
8x Ivybridge EX CPU's	X	X	X	X	X	X	X	X	X	X	X	--	--
16x Ivybridge EX CPU's	X	X	X	X	X	X	X	X	X	X	X	X	X
SAP HANA scale out sizes													
8x Ivybridge EX CPU's	--	--	--	--	--	--	--	--	--	--	X	--	--
16x Ivybridge EX CPU's	--	--	--	--	--	--	--	--	--	--	--	--	X

* SoH scale out HW configuration only recommended if 6 TB sizing is exceeded.

Figure 4 – SAP HANA SoH

** Source: "SAP HANA Hardware platform based on IvyBridge EX" from SAP AG (July 2014)

Link to PAM: <http://global.sap.com/community/ebook/2014-09-02-hana-hardware/enEN/appliances.html>

Virtual Compute Nodes with VMware

As per SAP Note 1788665 the SAP HANA installation can also be virtualized with VMware. The current limitation for productive use is 1 VM on a physical node for a SAP HANA instance. Please check the SAP or VMware specific sites for updates as there are changes to come in H1/2015 in the meaning of vSphere 6.0, multi VM, large VM (4TB RAM) and 8 socket hardware support.



Capability	Supported in Production	Supported in Test/Dev
HANA Scale up to 1TB of Memory	Yes	Yes
vCloud Suite / vSphere version	5.5	5.1 and 5.5
SAP HANA version	SP 07 and above	SP 05 and above
vSphere vMotion	Yes	Yes
VMware HA	Yes	Yes
VMware DRS	Yes	Yes
Server Hardware	Server Hardware of Certified Appliances (BOM)	Server Hardware of Certified Appliances (BOM)
Storage	Internal storage of Certified Appliances or  TDI certified shared storage	Internal storage of Certified Appliances or  TDI certified shared storage
Scale Out Configuration	No, planned for early H1 / 2015	No, planned for early H1 / 2015
CPU Sockets per server	up to 4	up to 8

Figure 5 – VMware Overview

Source: <http://scn.sap.com/docs/DOC-60470>

There is a detailed Best Practice Guide from VMware for Scale-up configuration that can be found under this link http://www.vmware.com/files/pdf/SAP_HANA_on_vmware_vSphere_best_practices_guide.pdf.

It covers architectural parts as DRS, vMotion, High Availability and host profiles and also more configuration specific topics as the use of VMDK, VMFS, SCSI and PVSCSI.

Network

The Nimble Storage CS-Series can be combined with any SAP HANA TDI certified compute nodes. The network integration is most likely customer specific but should meet the network requirements. The architecture schema at the beginning shows the use of a NEXUS 5000 but also a NEXUS 7000/9000 model would be fine.

The current Cisco UCS Fabric Interconnects offers an 8Gbit/s FC connectivity. The Nimble Storage offers 16Gbits/s for FC connections. Note that this is a compatible configuration and that the FC connection bandwidth was not the limiting factor in the SAP HANA TDI storage certification.

Shared storage /hana/shared

In every SAP HANA Scale-out environment there needs to be a shared storage directory for the SAP HANA instance. To offer this shared storage with the Nimble CS-Series we recommend to use a Linux based HA cluster (e.g. two physical or virtual compute nodes) providing an NFS export.

Operating System

The operating system of the compute nodes is one of the supported platforms for Nimble Storage. All SAP HANA certified operating systems supported by the compute node hardware manufacturer of choice can be used. In case of Cisco this is SLES, SLES for SAP and RHEL.

Please take into account that the standard SLES support most likely is not sufficient for an enterprise application like SAP HANA. It is strongly recommended to use SLES for SAP or RHEL instead.

(<http://global.sap.com/community/ebook/2014-09-02-hana-hardware/enEN/appliances.html>)

SAP HANA Storage Connector

The Nimble Storage was certified with the SAP HANA storage connector “hdb_ha.fcClientLVM”. This recommends the use of the Linux Logical Volume Manager (LVM) for LUN, volume group and file system management.

This storage connector comes with SAP HANA SPS 9.

File System

Any SAP HANA certified file system can be used. As per Cisco SAP HANA TDI whitepaper we recommend to use NFS for /hana/shared and xfs for /hana/data and /hana/log.

(http://www.cisco.com/c/en/us/solutions/collateral/data-center-virtualization/sap-applications-on-cisco-ucs/whitepaper_c11-733582.pdf)

(<http://global.sap.com/community/ebook/2014-09-02-hana-hardware/enEN/appliances.html>)

Architecture Overview

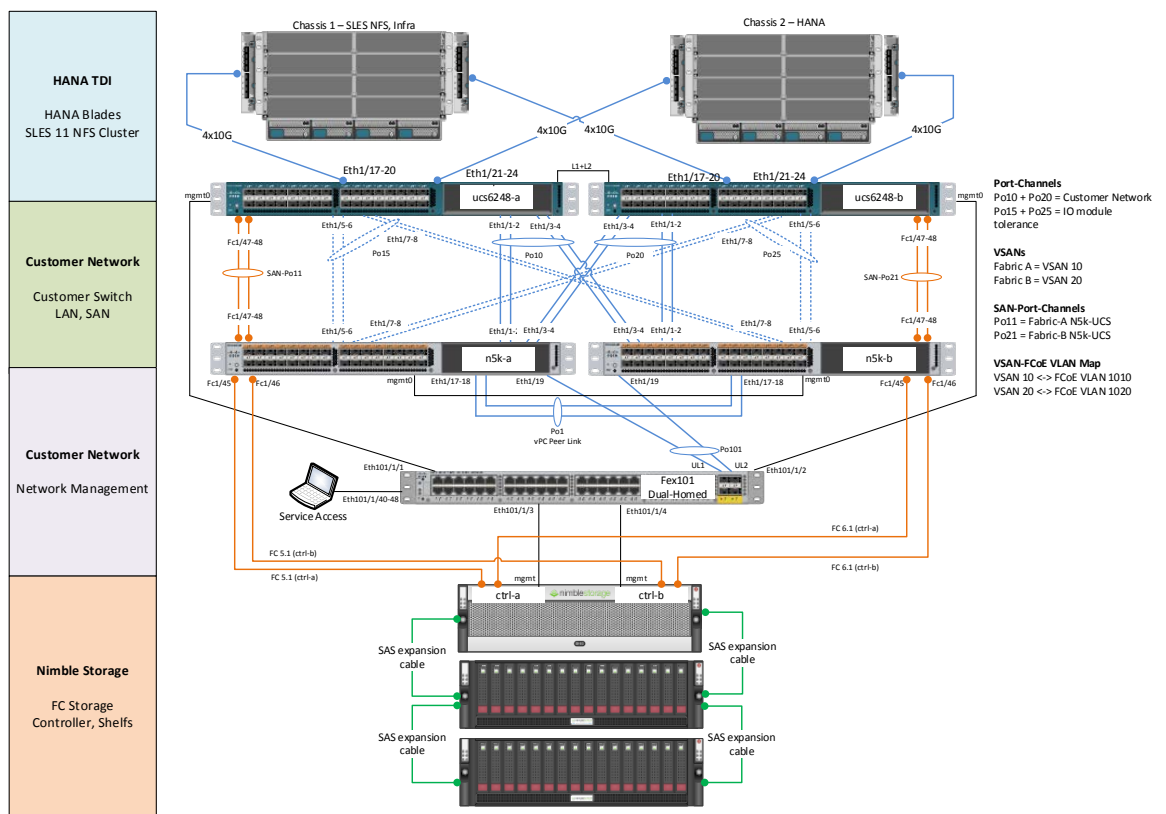


Figure 6 – Architectural Overview

Product Family	Ultimate Performance Scale-Out Cluster ¹⁷	Extreme Performance Family					High Performance Family				
Nimble CS-Series Array	4x CS700	CS700					CS500				
Raw Disk Capacity, Base (TB) ²	1,640	12	24	36	48	72	12	24	36	48	72
Min. Usable Capacity (TB) ⁴	1,280	8	16	25	33	50	8	16	25	33	50
Effective Capacity, Base (TB) ²	1,280-2,560	8-16	16-32	25-50	33-66	50-100	8-16	16-32	25-50	33-66	50-100
Effective Capacity, Maximum (TB) ^{2,3,5}	2,560	556	572	590	606	640	556	572	590	606	640
Max. Number of Disk Expansion Shelves	24	up to 6					up to 6				
Base/Max Flash Capacity per Array (GB)	25,600	3,200 to 6,400					1,200 to 6,400				
Max Flash Capacity with All-Flash Shelf (GB)	166,400	32,000					32,000				
Power Requirement (Watts)	13,000	650					600				

Figure 7 – Nimble CS-Series Specifications

http://info.nimblestorage.com/rs/nimblestorage/images/Nimble_CS-Series_Datasheet.pdf

Scale-out configuration

The tests with the CS-500 have shown the support up to 4 SAP HANA nodes in a Scale-out configuration. When comparing the CS-700 configuration we will use to support SAP HANA with the CS-500 configuration used in certification testing, Nimble’s performance engineering and performance QA teams have found the CS-700 to be 50% to 90% faster on random-access workloads, and 50% to 60% faster on sequential access workloads. Based on these results we are confident in our ability to support 6 SAP HANA nodes using the CS-700. The Ultimate Performance Scale-Out Cluster with 4x CS-700 scales linearly. With this cluster we support up to 24 SAP HANA nodes.

Nimble CS-Series Array	4x CS-700	CS-700	CS-500
Max. SAP HANA	24	6	4

nodes			
-------	--	--	--

Deployment

This section is based on the whitepaper “SAP HANA on Cisco UCS Installation Options”.

http://www.cisco.com/c/en/us/solutions/collateral/data-center-virtualization/sap-applications-on-cisco-ucs/whitepaper_c11-733582.pdf

All the examples and screenshots are based on the current published version. Please check for newer versions.

Customer Switch (Cisco Nexus)

The Cisco Nexus switches are part of the customer network and deliver 10G Ethernet, Management Access and 8G Fiber Channel (Dual-Fabric).

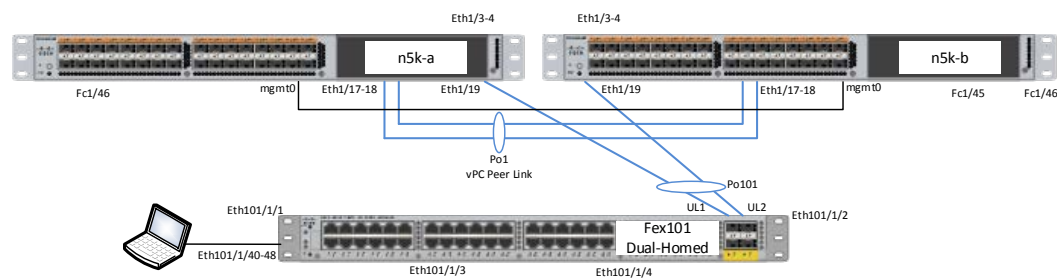


Figure 8 – Customer Network

Both switches are configured as vPC peers using a Peer-Link via Port-Channel 1 and keep-alive-Link via Interface mgmt0. Nexus 2000 FEX is dual-homed to both switches for RJ45 1000/100/10M access.

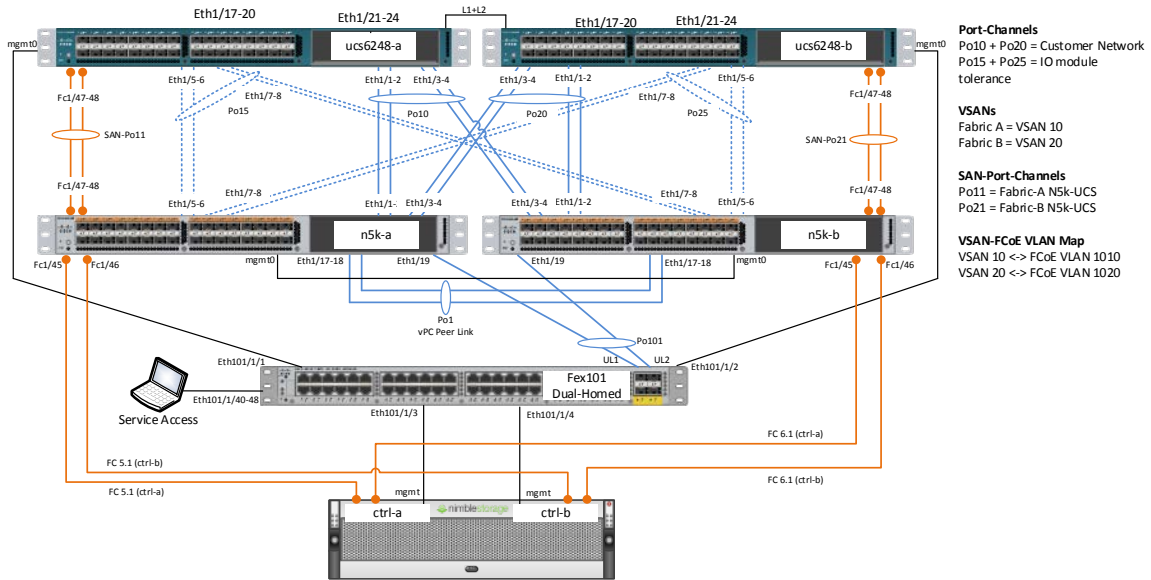


Figure 9 – Storage Network

Ethernet links between Nexus 5500 Switches (N5k) and Fabric Interconnects (FI) are always configured as a vPC. For UCS IOM high availability we configured two separate vPC's between Nexus and FI.

- Port-Channels 10 and 20 are used as the Customer Network connection to FI's
- Port-Channel 15 and 25 (just 3 VLANs are allowed on that links)
- Management connections from Nimble Storage and FI's are connected to Nexus 2000 (part of customer network)

Cisco Nexus Fibre Channel

A dedicated FC Fabric is not required but used. Connecting Nimble Storage Controllers directly to UCS FI's is possible with minimal adjustments to the UCS configuration.

We use the fabric for a better view on FC Configuration, Traffic and debug capabilities.

Zoning

We use a standard FC Dual-Fabric with soft zoning (WWN zoning). Each Fabric contains 4x 8G FC links between Controllers/Fabric and Fabric/FI's.

The details of the vsan configuration are in Appendix A

UCS Setup – Chassis Links

Each Chassis is connected with 4x 10G per IOM.

UCS Setup – Power Policy

Power Policy depends on how the blades are configured (hardware) and which settings regarding power saving (CPU C-states and options) are configured. A fully equipped chassis without any configured power saving may require N+1 for full performance instead of Grid for more availability.

N+1 = three active PSU; one PSU can fail

Grid = two active PSU; two can fail

Depending on the current power usage, it is possible that an N+1 configuration can survive with less than 3 PSU's but without any warranty.

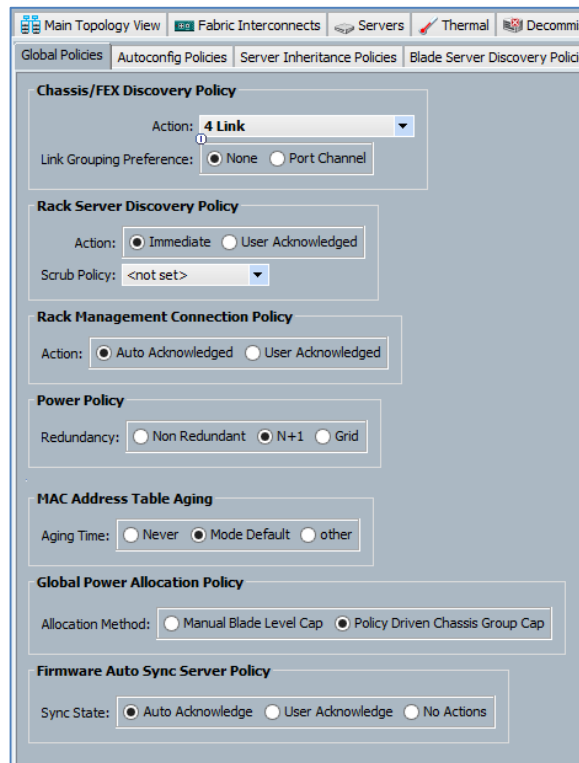


Figure 10 – Global Policies

UCS Setup – Switching Mode

Both FI's run in Ethernet and FC End-Host Mode.

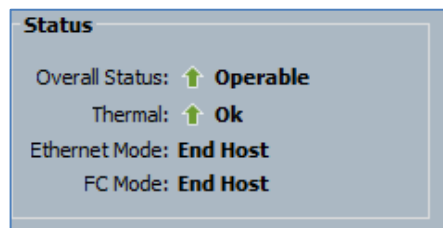


Figure 11 – Switching Mode

UCS Setup – Unified Ports

This port configuration is an example.

Onboard ports 1/1 – 26 are configured as Ethernet. Onboard ports 1/27 – 32 are configured as FC.



Figure 12 – Port Configuration - Ethernet / FC

UCS Setup – VLANs

Not all configured VLANs are required. Only VLANs T01-Client, T01-Storage and T01-Internal are required as a minimal configuration.

The VLAN setup is customer specific.

Name	ID	Type	Transport	Native	VLAN Sharing
VLAN default (1)	1	Lan	Ether	no	None
VLAN T01-Admin (112)	112	Lan	Ether	no	None
VLAN T01-AppServer (223)	223	Lan	Ether	no	None
VLAN T01-Backup (221)	221	Lan	Ether	no	None
VLAN T01-Boot (127)	127	Lan	Ether	no	None
VLAN T01-Client (2)	2	Lan	Ether	yes	None
VLAN T01-DataSource (224)	224	Lan	Ether	no	None
VLAN T01-Internal (220)	220	Lan	Ether	no	None
VLAN T01-Replication (225)	225	Lan	Ether	no	None
VLAN T01-Storage (110)	110	Lan	Ether	no	None

Figure 13 – VLAN Configuration

VLANs are grouped in VLAN-Groups and assigned to a specific uplink interface.

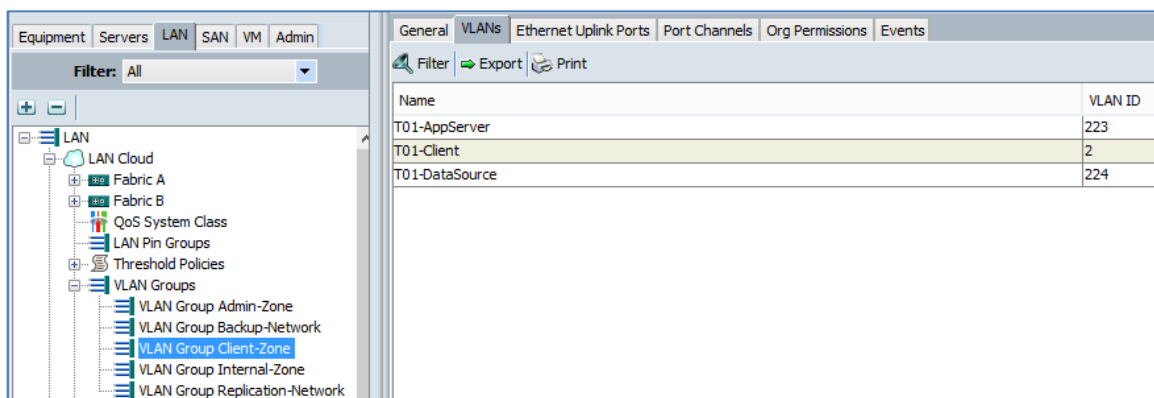


Figure 14 – Client Zone VLAN

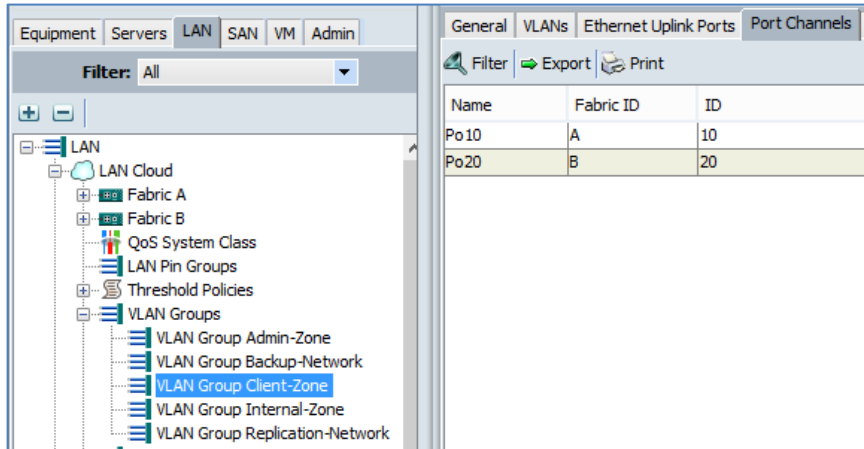


Figure 15 – Client Zone Port Channel

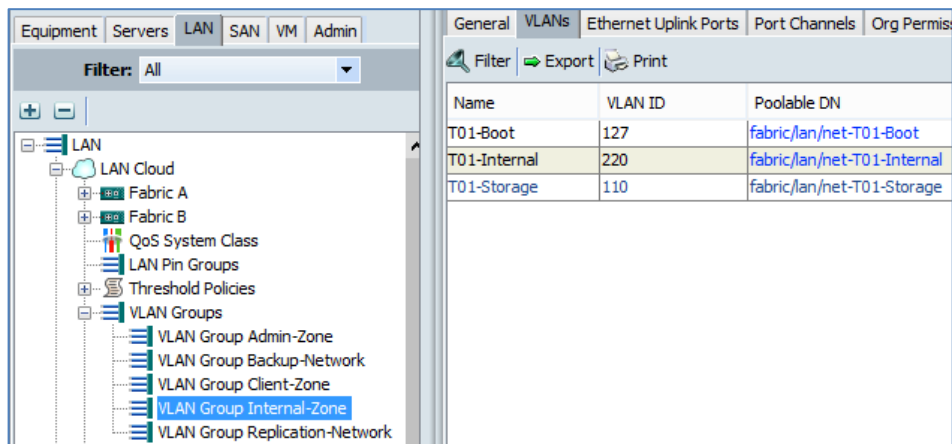


Figure 16 – Internal Zone VLAN

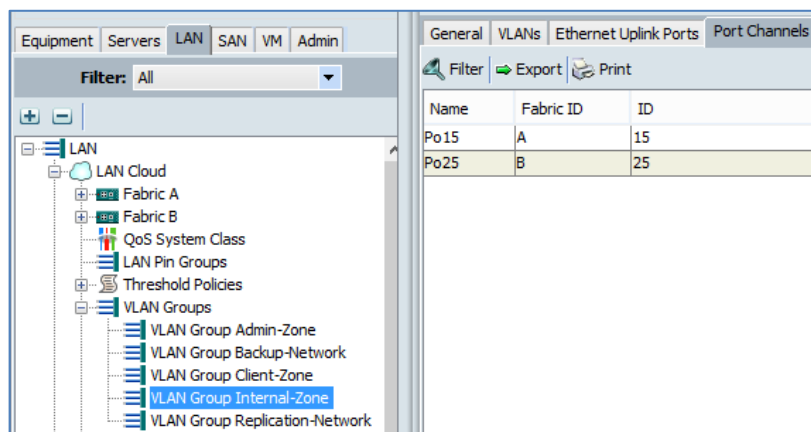


Figure 17 – Internal Zone Port Channel

UCS Setup – VSANs

Two VSANs are required, one each Fabric. VSANs are mapped to an internal FCoE VLAN.

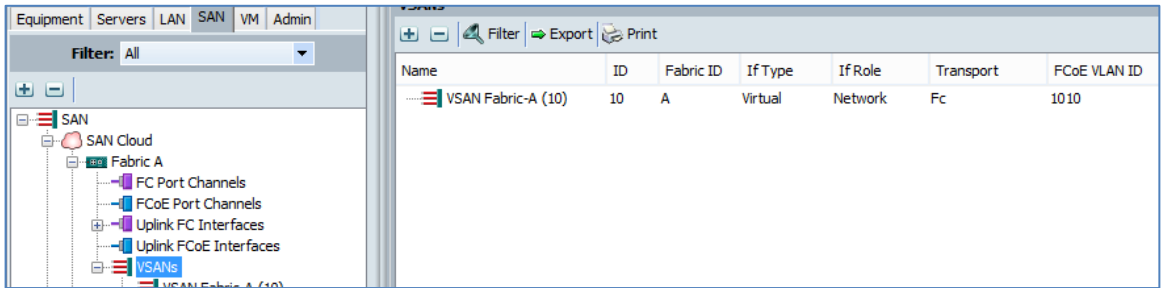


Figure 18 – VSAN A

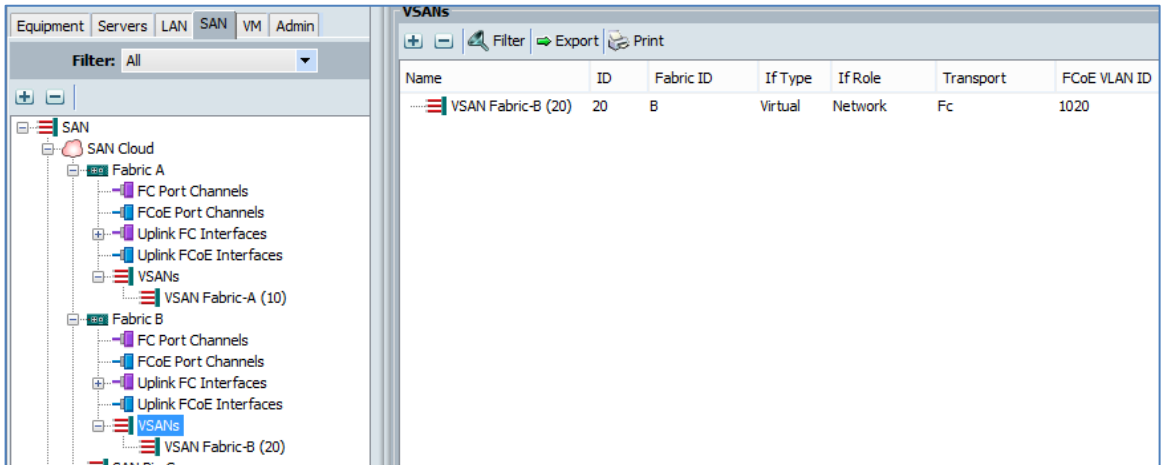


Figure 19 – VSAN B

UCS Setup – Network Control Policy

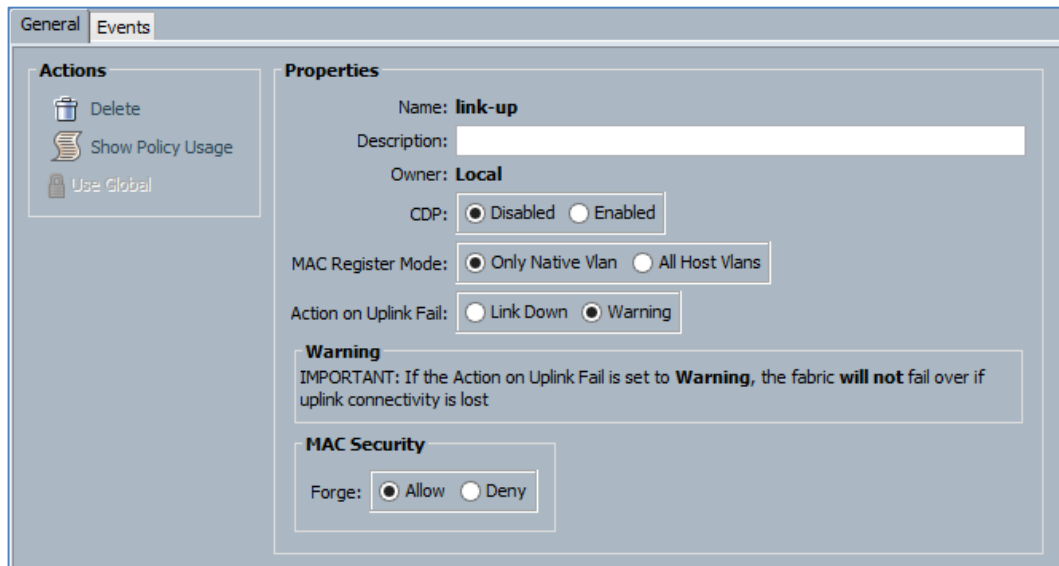


Figure 20 – Network Control Policy

UCS Setup – MAC Pools

Create a MAC Pool for each VLAN or a single pool for all VLANs.

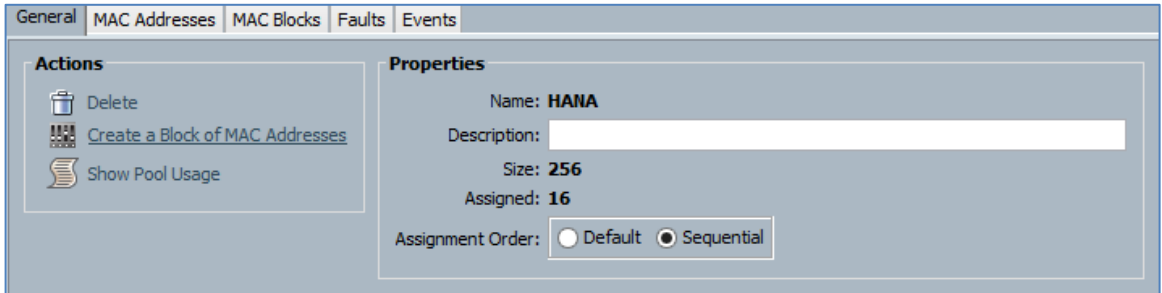


Figure 21 – VLAN MAC Pool

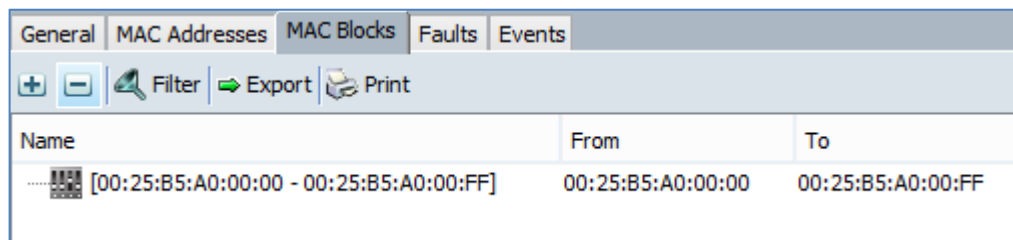


Figure 22 – VLAN MAC Pool Blocks

UCS Setup – vNIC Templates

We create a vNIC template for every vNIC we use, e.g. T01-Client, T01-Storage, T01-Internal.

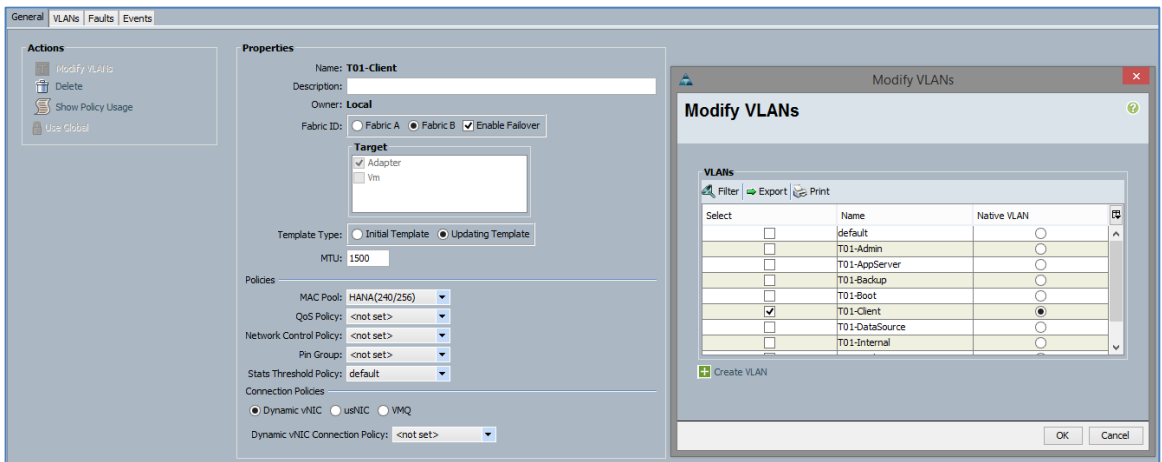


Figure 23 – Client vNIC Template

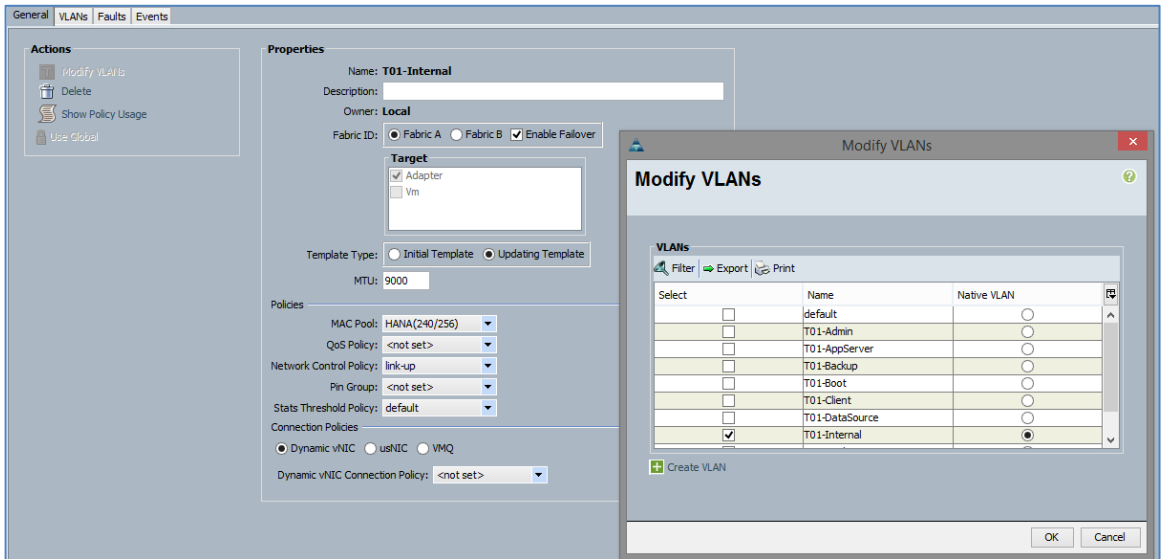


Figure 24 – Internal vNIC Template

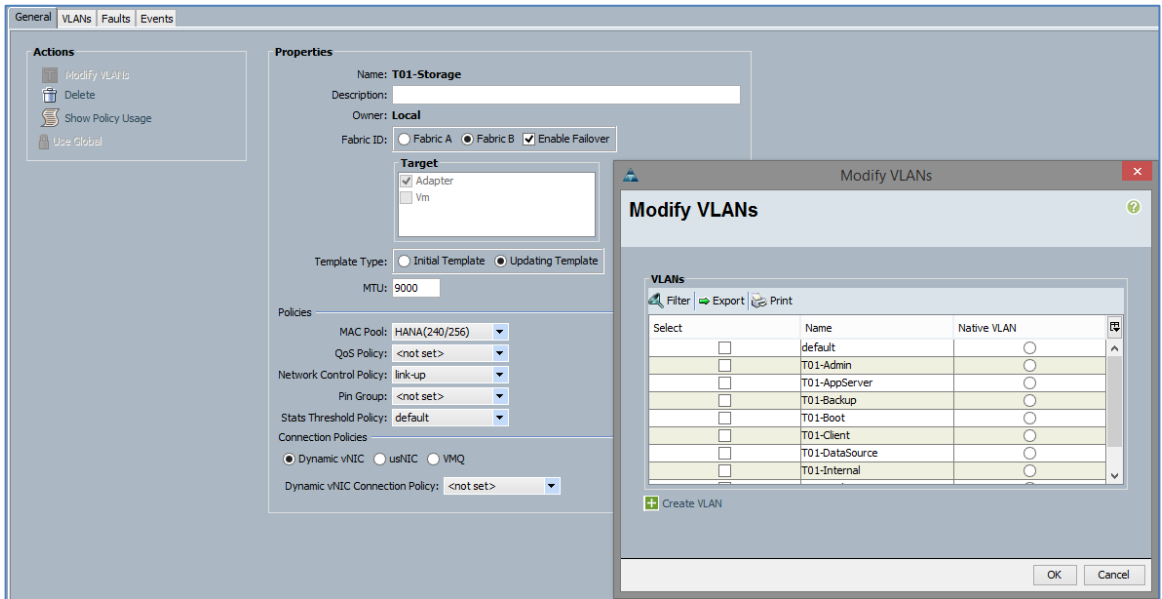


Figure 25 – Storage vNIC Template

UCS Setup – WWNN Pool

This pool configuration is an example.

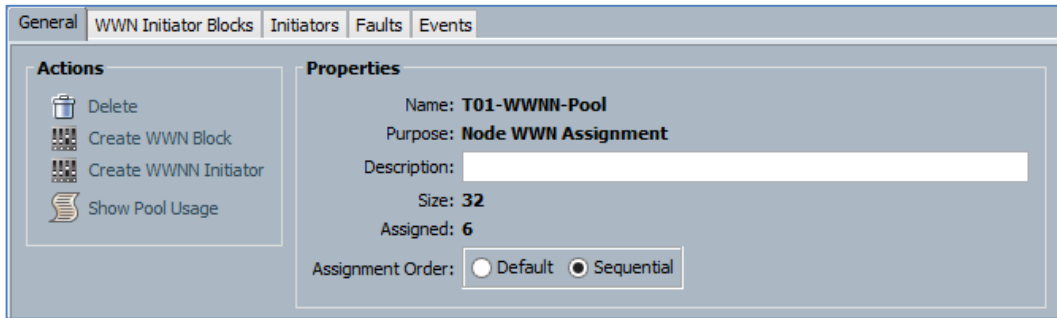


Figure 26 – WWNN Pool

General | WWN Initiator Blocks | Initiators | Faults | Events

+ - Filter Export Print

Name	From	To
[20:00:00:25:B5:AA:00:00 - 20:00:00:25:B5:AA:00:1F]	20:00:00:25:B5:AA:00:00	20:00:00:25:B5:AA:00:1F

Figure 27 – WWN Pool Blocks

UCS Setup – WWPN Pool Fabric A

This pool configuration is an example.

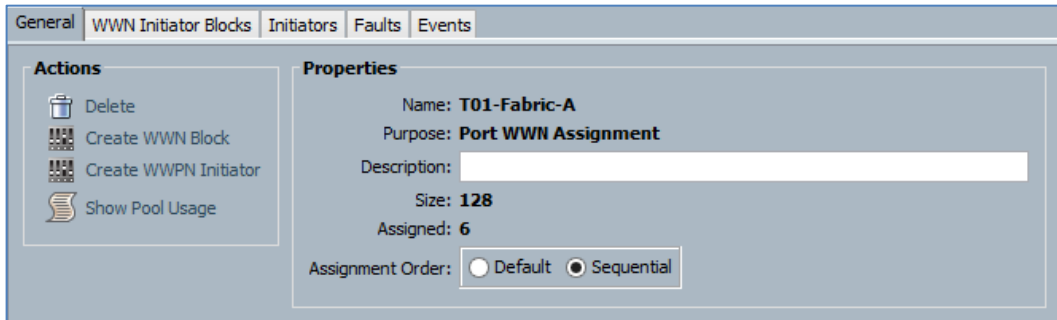


Figure 28 – VSAN A WWPN Pool

General | WWN Initiator Blocks | Initiators | Faults | Events

+ - Filter Export Print

Name	From	To
[20:00:00:25:B5:AA:AA:00 - 20:00:00:25:B5:AA:AA:7F]	20:00:00:25:B5:AA:AA:00	20:00:00:25:B5:AA:AA:7F

Figure 29 – VSAN A WWPN Pool Blocks

UCS Setup – WWPN Pool Fabric B

This pool configuration is an example.

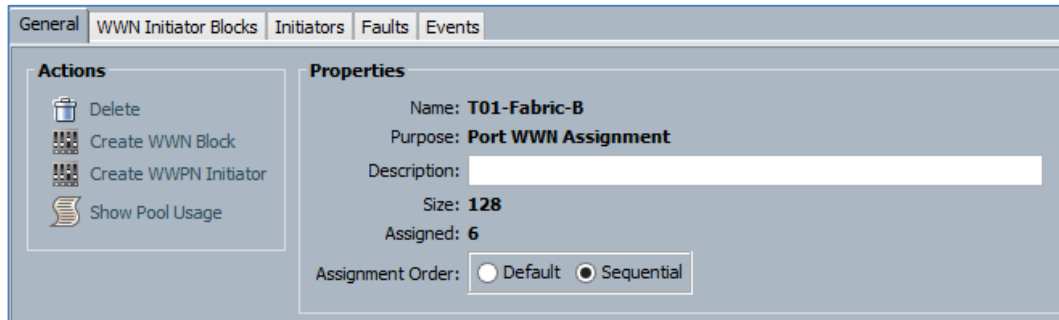


Figure 30 – VSAN B WWPN Pool

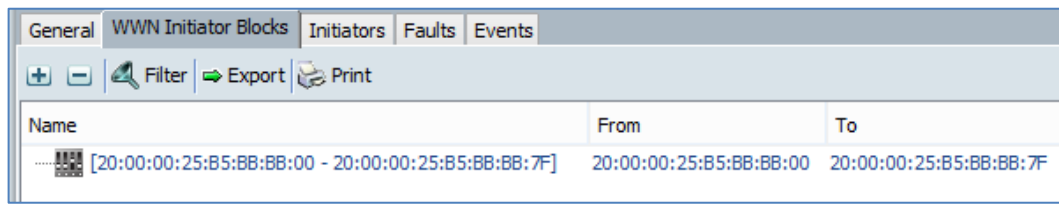


Figure 31 – VSAN B WWN Pool Blocks

UCS Setup – vHBA Templates

This configuration is an example.

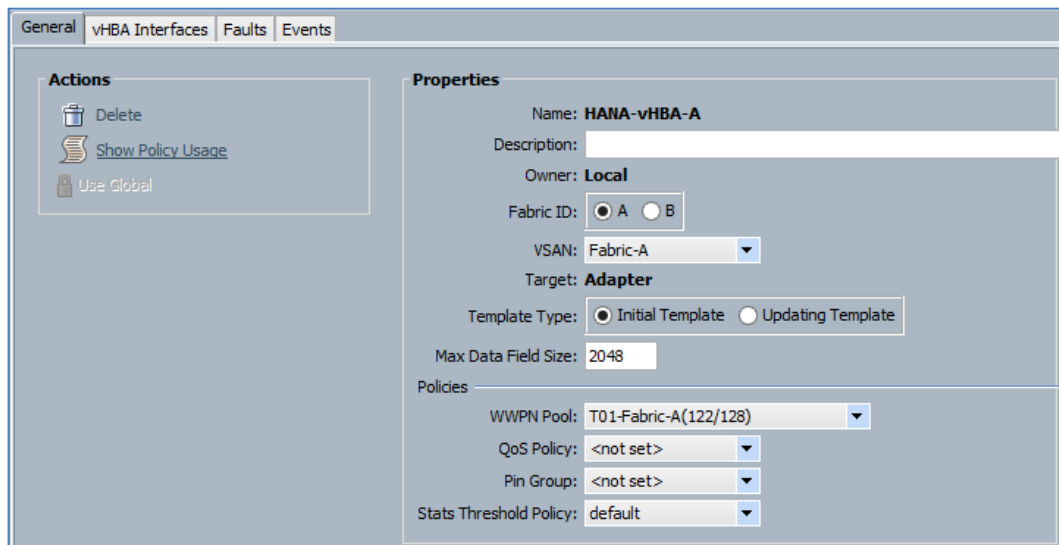


Figure 32 – vHBA - Fabric A

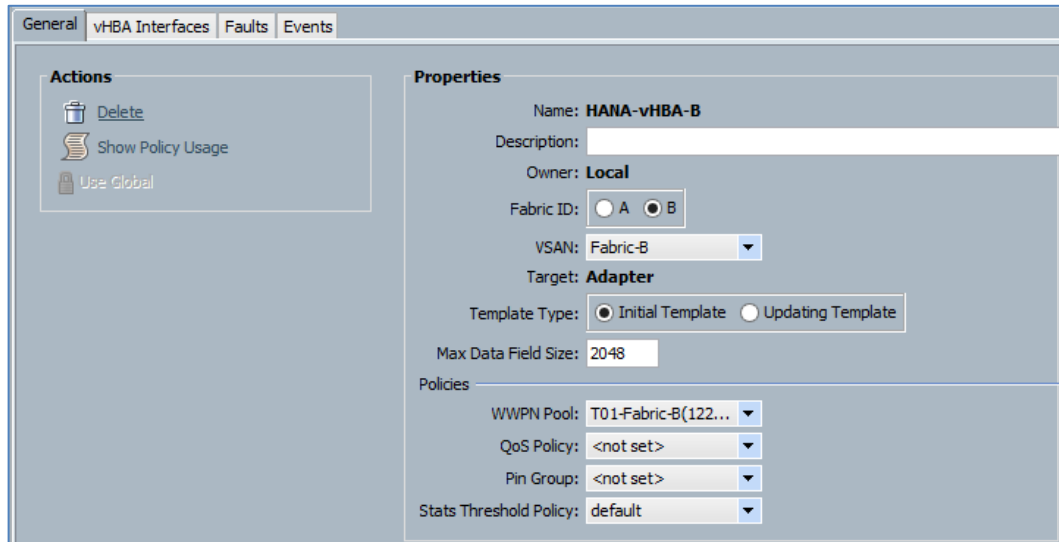


Figure 33 – vHBA - Fabric B

UCS Setup – Ethernet Adapter Policy

These settings are non UCS standards and are documented in the Cisco SAP HANA TDI whitepaper. These settings are necessary to meet the network speed KPIs.

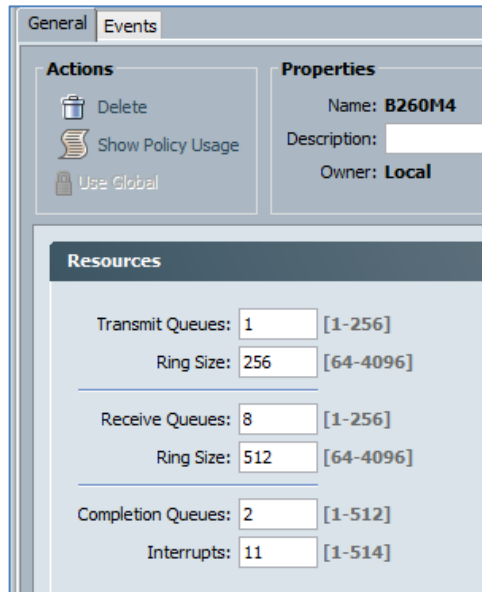


Figure 34 – Ethernet Adapter Settings

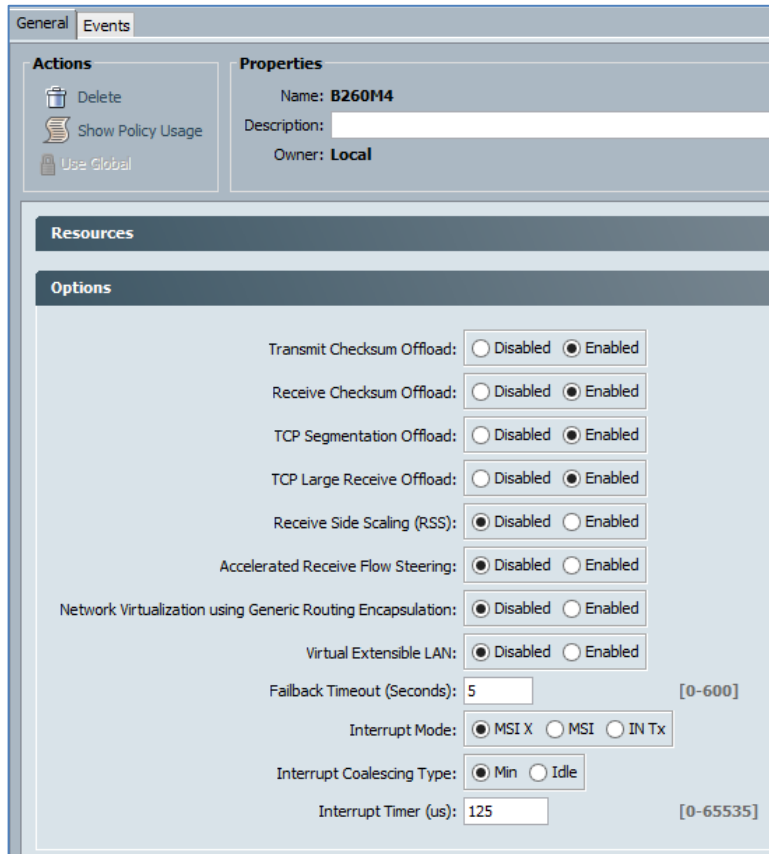


Figure 35 – Ethernet Adapter Options

UCS Setup – BIOS Policy

These settings are documented in the Cisco SAP HANA TDI whitepaper and necessary to meet the KPIs.

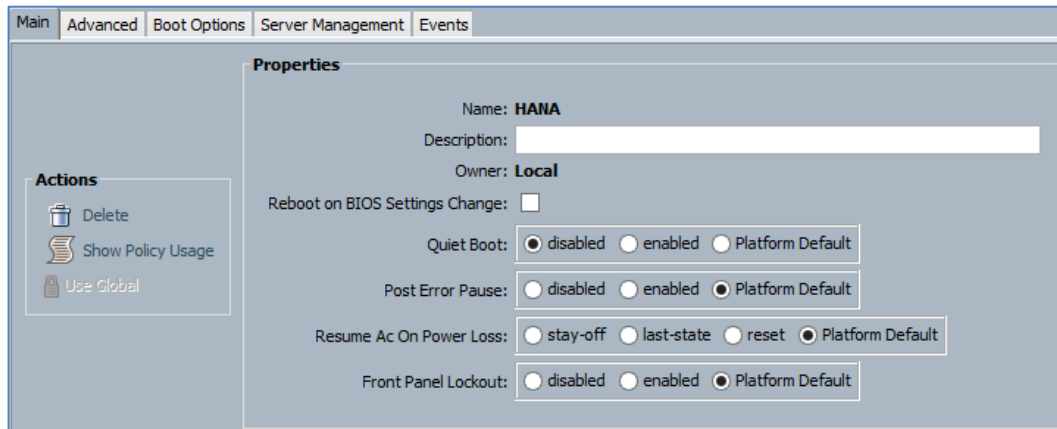


Figure 36 – BIOS Policy

Main	Advanced	Boot Options	Server Management	Events
Processor				
Intel Directed IO				
RAS Memory				
Serial Port				
USB				
PCI				
QPI				
LOM and PCIe Slots				
Turbo Boost: <input type="radio"/> disabled <input checked="" type="radio"/> enabled <input type="radio"/> Platform Default				
Enhanced Intel Speedstep: <input type="radio"/> disabled <input checked="" type="radio"/> enabled <input type="radio"/> Platform Default				
Hyper Threading: <input type="radio"/> disabled <input checked="" type="radio"/> enabled <input type="radio"/> Platform Default				
Core Multi Processing: all				
Execute Disabled Bit: <input checked="" type="radio"/> disabled <input type="radio"/> enabled <input type="radio"/> Platform Default				
Virtualization Technology (VT): <input checked="" type="radio"/> disabled <input type="radio"/> enabled <input type="radio"/> Platform Default				
Hardware Pre-fetcher: <input type="radio"/> disabled <input type="radio"/> enabled <input checked="" type="radio"/> Platform Default				
Adjacent Cache Line Pre-fetcher: <input type="radio"/> disabled <input type="radio"/> enabled <input checked="" type="radio"/> Platform Default				
DCU Streamer Pre-fetch: <input type="radio"/> disabled <input type="radio"/> enabled <input checked="" type="radio"/> Platform Default				
DCU IP Pre-fetcher: <input type="radio"/> disabled <input type="radio"/> enabled <input checked="" type="radio"/> Platform Default				
Direct Cache Access: <input type="radio"/> disabled <input checked="" type="radio"/> enabled <input type="radio"/> Platform Default				
Processor C State: <input checked="" type="radio"/> disabled <input type="radio"/> enabled <input type="radio"/> Platform Default				
Processor C1E: <input checked="" type="radio"/> disabled <input type="radio"/> enabled <input type="radio"/> Platform Default				
Processor C3 Report: <input checked="" type="radio"/> disabled <input type="radio"/> acpi-c2 <input type="radio"/> acpi-c3 <input type="radio"/> Platform Default				
Processor C6 Report: <input checked="" type="radio"/> disabled <input type="radio"/> enabled <input type="radio"/> Platform Default				
Processor C7 Report: <input checked="" type="radio"/> disabled <input type="radio"/> enabled <input type="radio"/> Platform Default				
CPU Performance: <input type="radio"/> enterprise <input type="radio"/> high-throughput <input checked="" type="radio"/> hpc <input type="radio"/> Platform Default				
Max Variable MTRR Setting: <input type="radio"/> auto-max <input type="radio"/> 8 <input checked="" type="radio"/> Platform Default				
Local X2 APIC: <input type="radio"/> xapic <input type="radio"/> x2apic <input type="radio"/> auto <input checked="" type="radio"/> Platform Default				
Power Technology: performance				
Energy Performance: performance				
Frequency Floor Override: <input type="radio"/> disabled <input type="radio"/> enabled <input checked="" type="radio"/> Platform Default				
P-STATE Coordination: <input type="radio"/> hw-all <input type="radio"/> sw-all <input type="radio"/> sw-any <input checked="" type="radio"/> Platform Default				
DRAM Clock Throttling: Platform Default				
Channel Interleaving: Platform Default				
Rank Interleaving: Platform Default				
Demand Scrub: <input type="radio"/> disabled <input type="radio"/> enabled <input checked="" type="radio"/> Platform Default				
Patrol Scrub: <input type="radio"/> disabled <input type="radio"/> enabled <input checked="" type="radio"/> Platform Default				
Altitude: Platform Default				

Figure 37 – BIOS Policy – Advanced

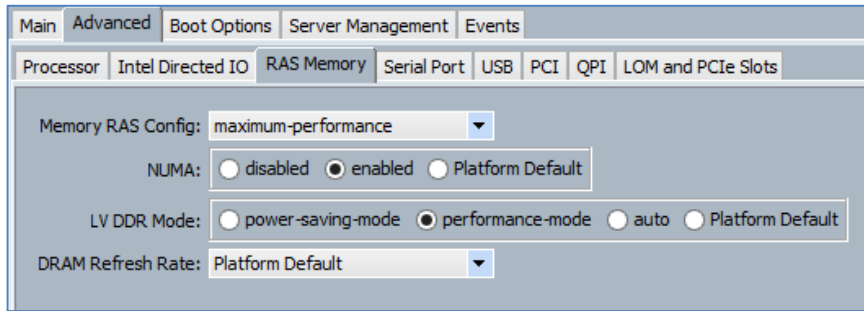


Figure 38 – BIOS Policy – RAS

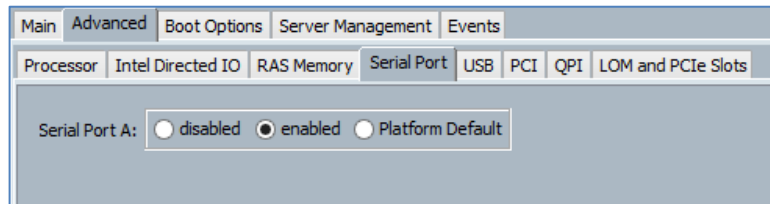


Figure 39 – BIOS Policy – Serial

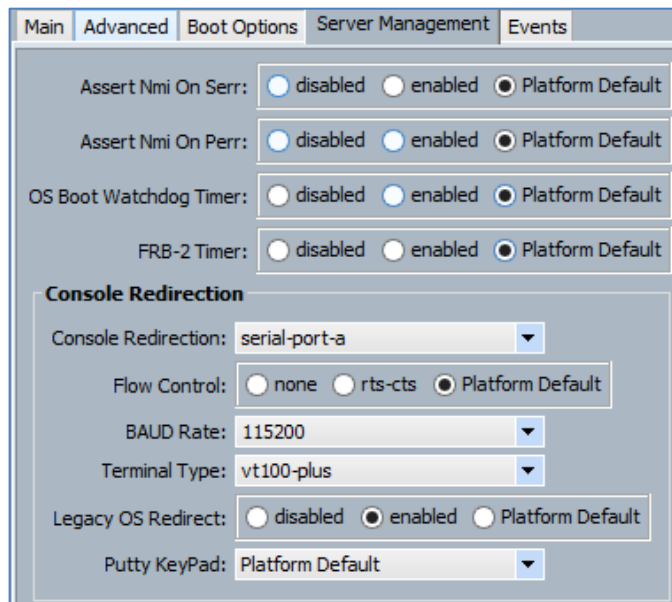


Figure 40 – BIOS Policy – Server

UCS Setup – Boot Policy

Note: The CD will be removed later.

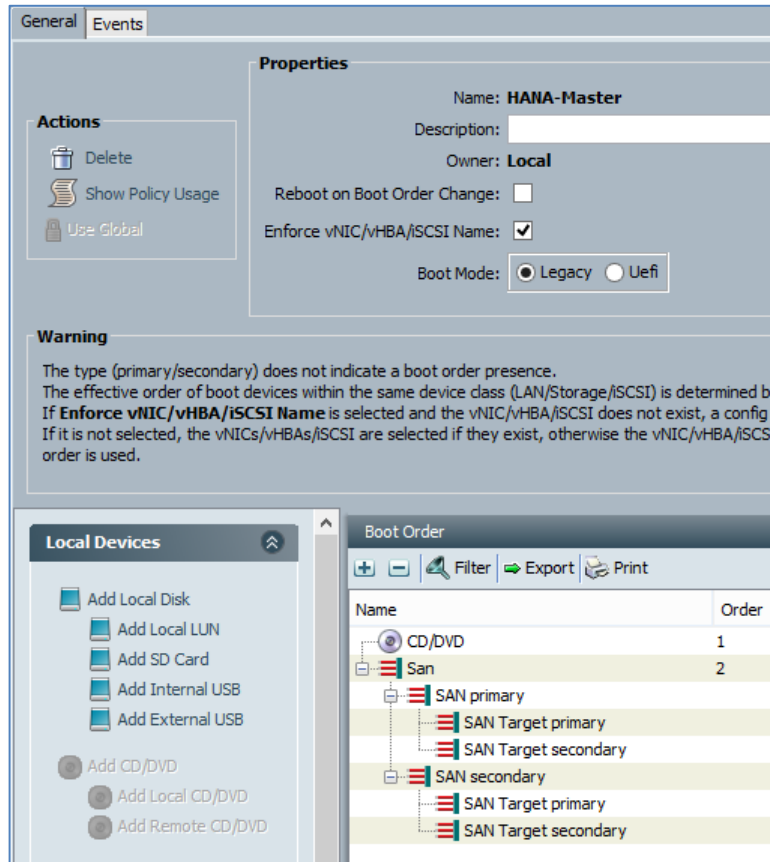


Figure 41 – Boot Policy

Name	Order	vNIC/vHBA/iSCSI vNIC	Type	Lun ID	WWN
CD/DVD	1				
San	2				
SAN primary		HBA-A	Primary		
SAN Target primary			Primary	0	56:C9:CE:90:F0:8B:97:04
SAN Target secondary			Secondary	0	56:C9:CE:90:F0:8B:97:02
SAN secondary		HBA-B	Secondary		
SAN Target primary			Primary	0	56:C9:CE:90:F0:8B:97:08
SAN Target secondary			Secondary	0	56:C9:CE:90:F0:8B:97:06

Figure 42 – Boot Interface Ordering

UCS Setup – Default Host Firmware Package

This configuration is an example.

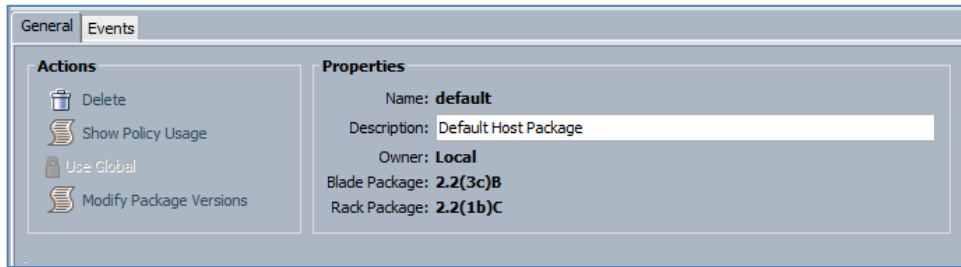


Figure 43 – UCS Host Firmware

UCS Setup – IPMI User

Set a password for user sapadmin.

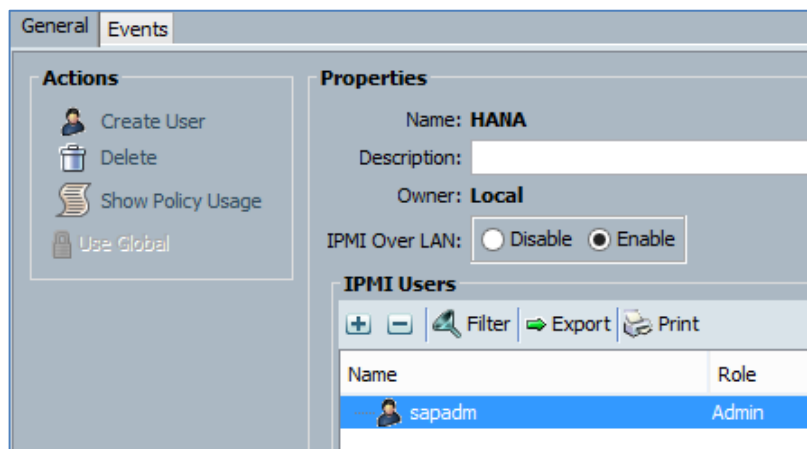


Figure 44 – IPMI User

UCS Setup – Maintenance Policy

This configuration is an example.

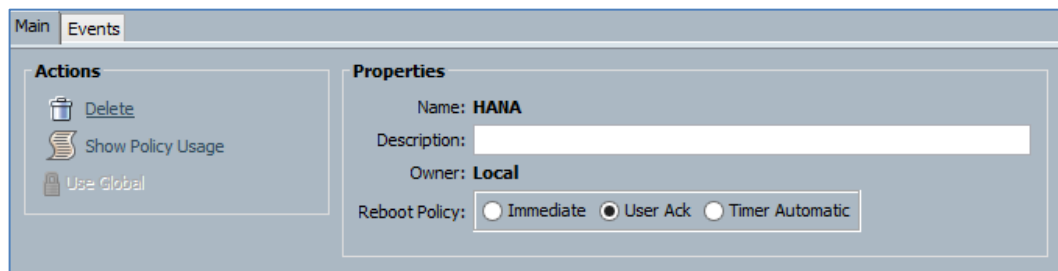


Figure 45 – Maintenance Policy

UCS Setup – Power Control Policy

This configuration is an example.

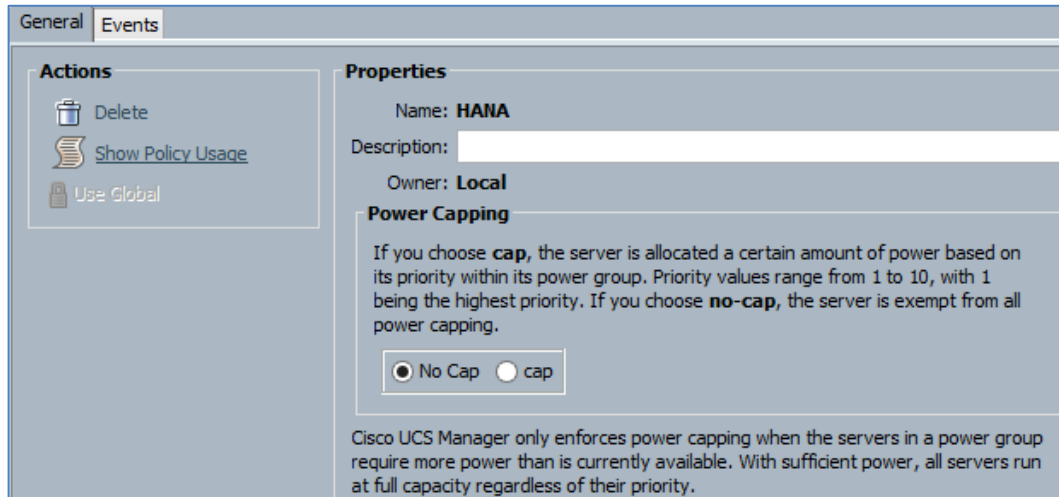


Figure 46 – Power Control Policy

UCS Setup – Serial over LAN Policy

This configuration is an example.

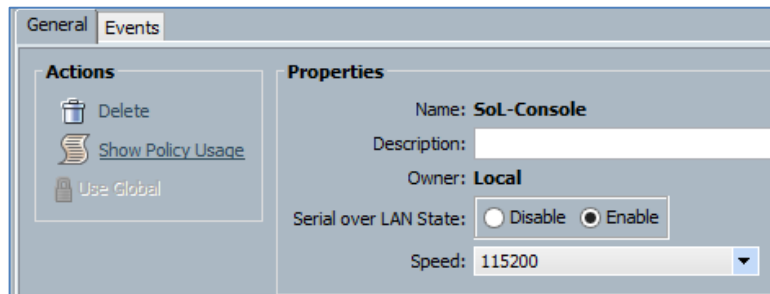


Figure 47 – LAN Policy

UCS Setup – UUID Pool

This configuration is an example.

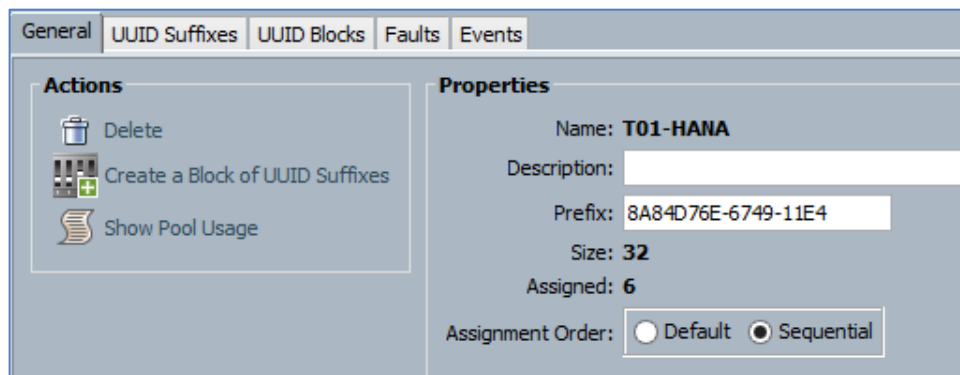


Figure 48 – UUID Pool


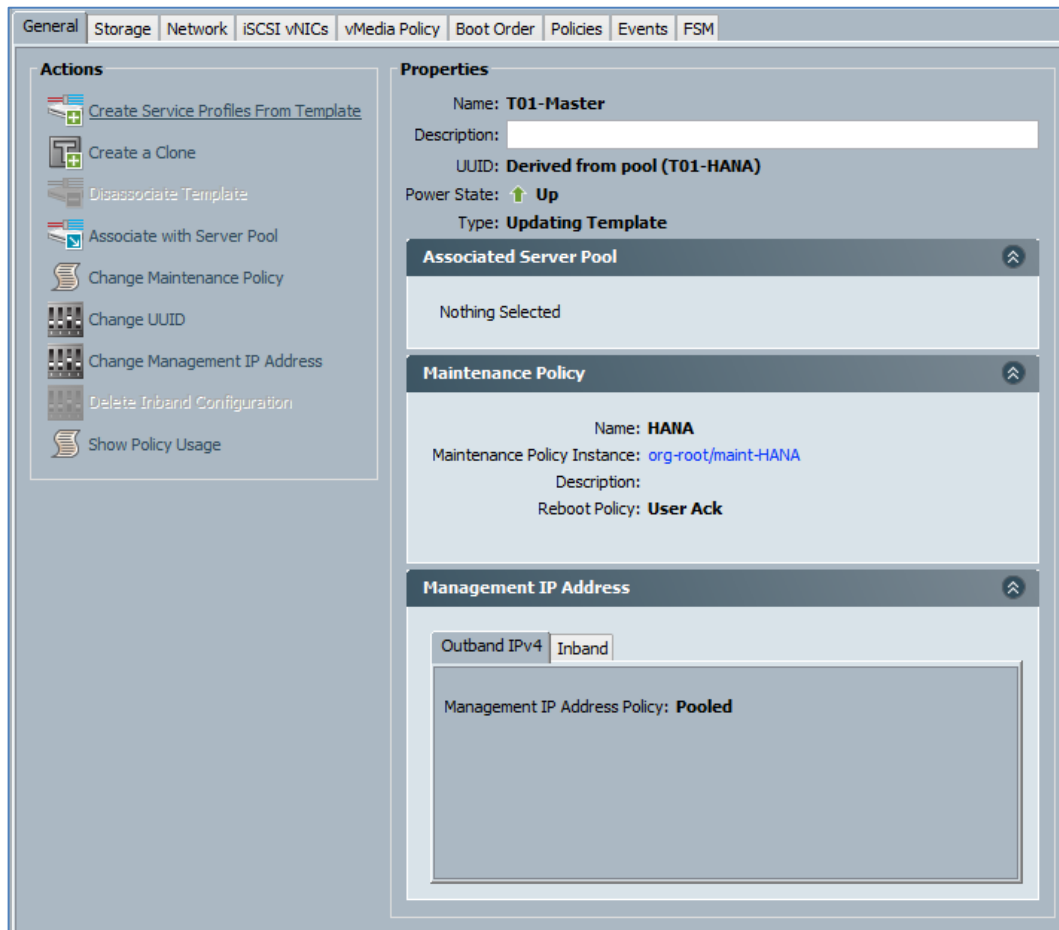
General UUID Suffixes UUID Blocks Faults Events		
+ - Filter Export Print		
Name	From	To
 [0000-00A000000001 - 0000-00A000000020]	0000-00A000000001	0000-00A000000020

Figure 49 – UUID Pool Blocks

UCS Setup – Service Profile Template

This configuration is an example.



General | Storage | Network | iSCSI vNICs | vMedia Policy | Boot Order | Policies | Events | FSM

Actions

- Create Service Profiles From Template
- Create a Clone
- Disassociate Template
- Associate with Server Pool
- Change Maintenance Policy
- Change UUID
- Change Management IP Address
- Delete Inband Configuration
- Show Policy Usage

Properties

Name: **T01-Master**

Description:

UUID: **Derived from pool (T01-HANA)**

Power State: **Up**

Type: **Updating Template**

Associated Server Pool

Nothing Selected

Maintenance Policy

Name: **HANA**

Maintenance Policy Instance: [org-root/maint-HANA](#)

Description:

Reboot Policy: **User Ack**

Management IP Address

Outband IPv4 | **Inband**

Management IP Address Policy: **Pooled**

Figure 50 – Service Profile Template

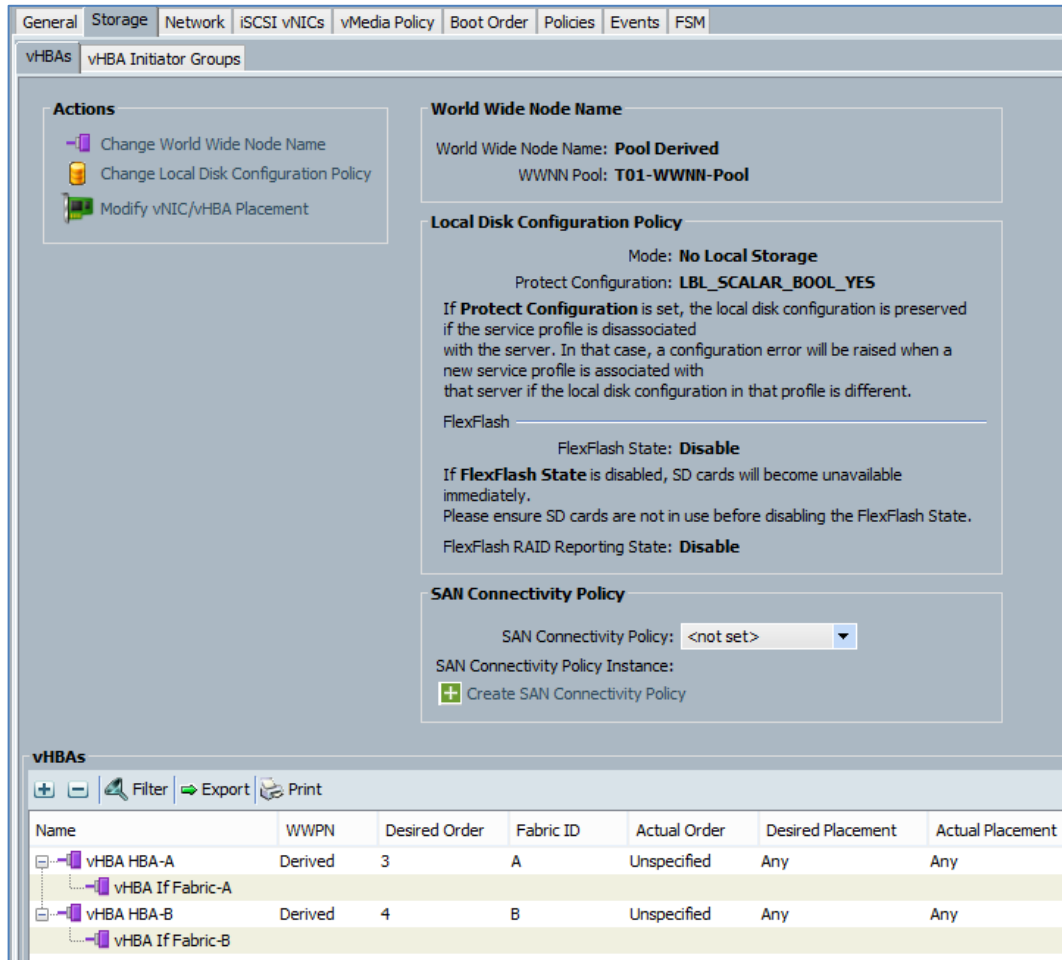


Figure 51 – Service Profile – Storage

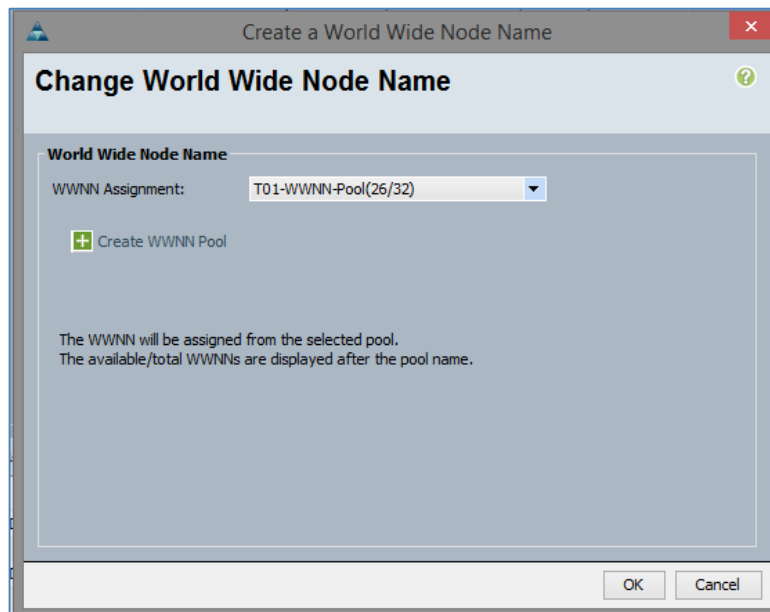


Figure 52 – Service Profile – Create WWNN

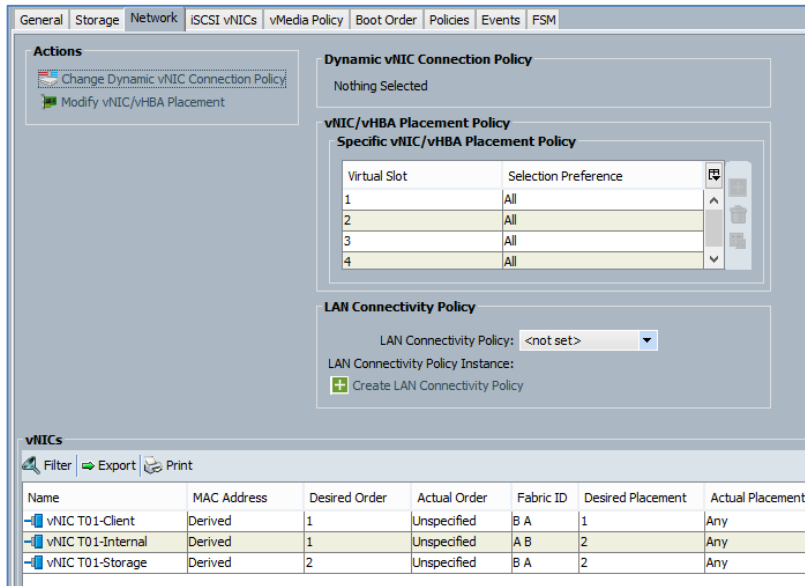


Figure 53 – Service Profile – Network

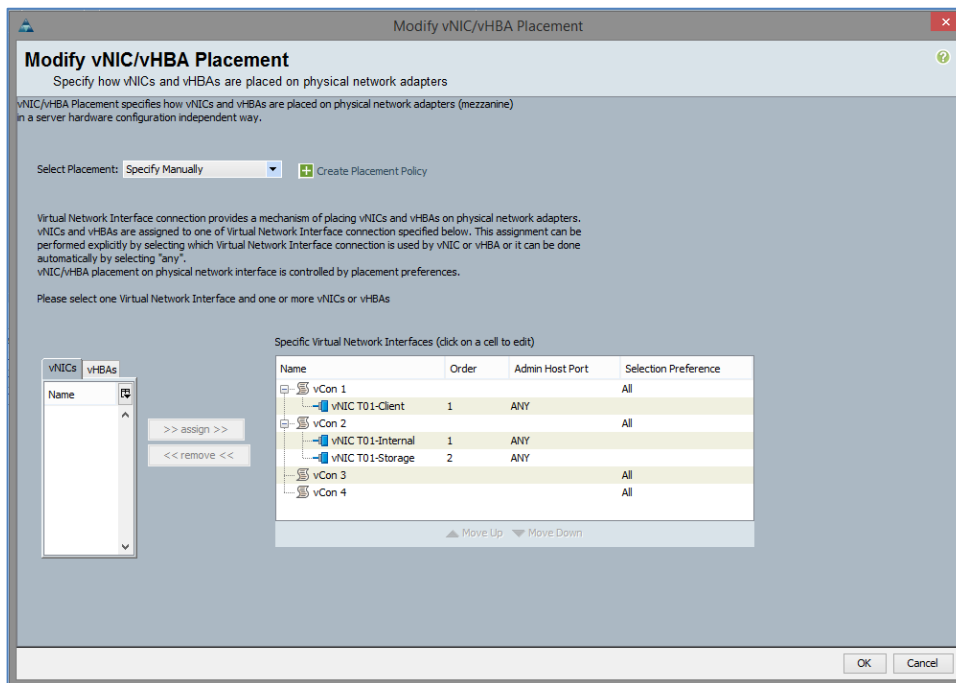


Figure 54 – Service Profile – vNIC/vHBA

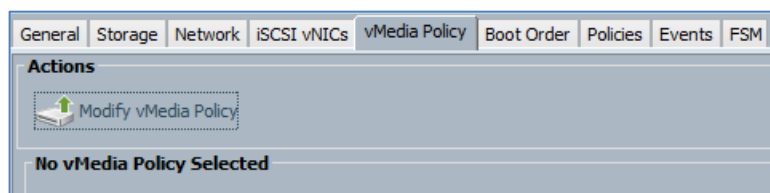


Figure 55 – Service Profile – vMedia

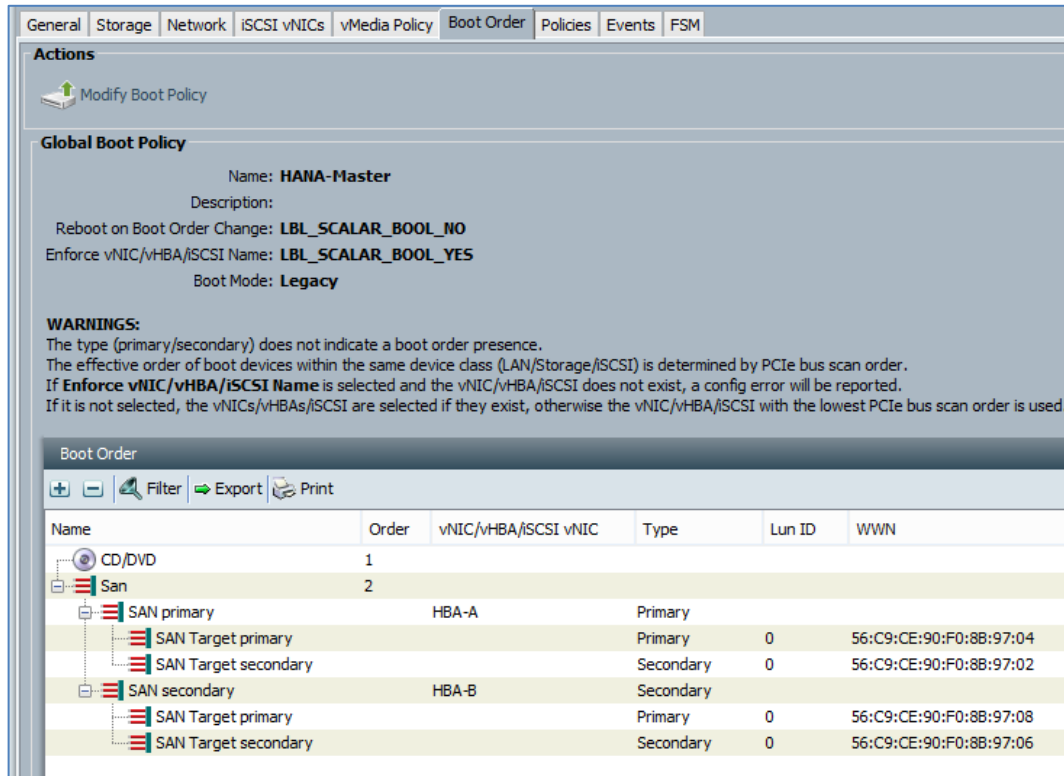


Figure 56 – Service Profile – Boot Order

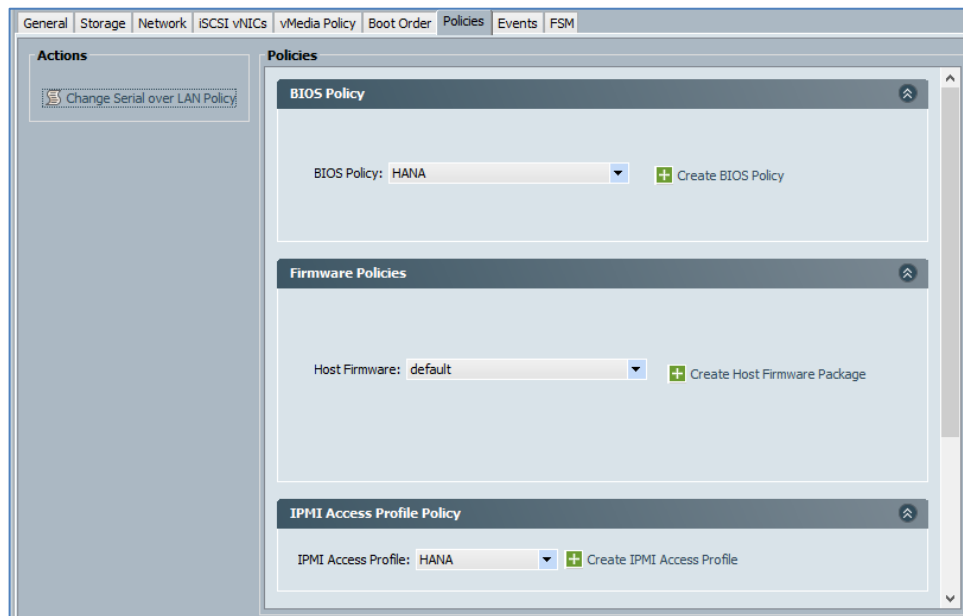


Figure 57 – Service Profile – Policies



Figure 58 – Service Profile – Policies (cont)

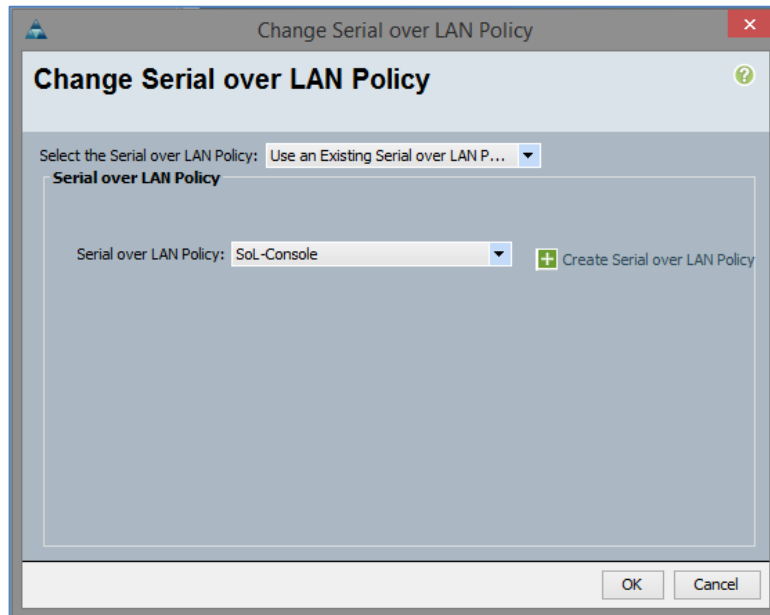


Figure 59 – SOL Policy

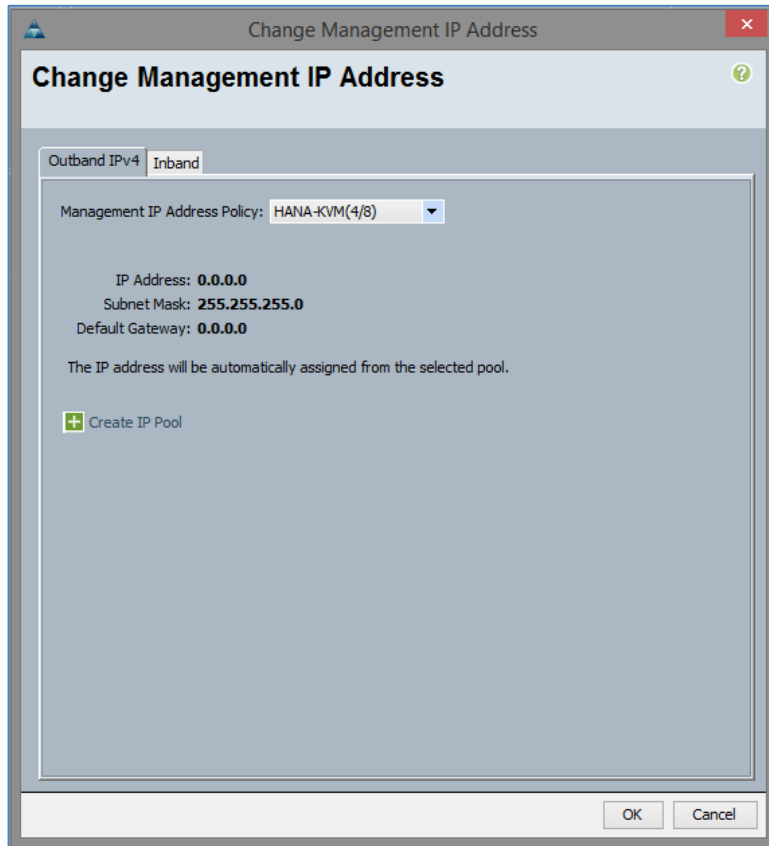


Figure 60 – Management IP

UCS Setup – Service Profiles

Create the service profiles and assign the servers.

Service Profiles				
All Failed Active Passive Disassociated Pending Hierarchical Pending Activities				
Filter Export Print				
Name	/	User Label	Overall Status	Assoc State
T Service Profile hana01			↓ Unassociated	↓ Unassociated
T Service Profile hana02			↓ Unassociated	↓ Unassociated
T Service Profile hana03			↓ Unassociated	↓ Unassociated
T Service Profile hana04			↓ Unassociated	↓ Unassociated
T Service Profile nodenfs01			↑ Ok	↑ Associated
T Service Profile nodenfs02			↓ Power Off	↑ Associated

Figure 61 – Service Profile Assignment

Nimble Storage – Storage Setup

The raid configuration is by default a triple-parity configuration. There is no specific configuration to be done. Details can be found in this technology overview

http://info.nimblestorage.com/rs/nimblestorage/images/nimblestorage_technology_overview.pdf

Nimble Storage – Network Configuration

This configuration is an example.

The screenshot shows the 'Network Configuration' page with the 'Subnets' tab selected. Under 'Management IP', the IP Address is 172.22.1.15, Network is 172.22.1.0, and Netmask is 255.255.255.0. The 'iSCSI Host Connection Method' is set to 'Automatic' with 'Enable rebalancing' checked. The 'Default Gateway' is 172.22.1.1.

Figure 62 – Nimble Management Network Setup

Subnet Label	Network	Netmask	Traffic Type	MTU	Bytes	VLAN ID
Management	172.22.1.0	255.255.255.0	Mgmt only	Standard	1500	

Figure 63 – Management Subnet Assignment

Group							
Subnets							
Interfaces							
Diagnostics							
IP Fibre Channel							
Interface	Array Name	Link Status	Subnet Label	Data IP Address	Unconfigured	VLAN ID	Tagged
eth1	SAP-HANA		Management				
eth2	SAP-HANA		Management				

Figure 64 – Management Port Assignment

Group		
Subnets		
Interfaces		
Diagnostics		
Diagnostic IP addresses are required for troubleshooting and Nimble Storage Support purposes in the event that a controller is not reachable through the management IP address. These IP addresses must be placed on the Group Management subnet.		
Management IP	Network	Netmask
<input type="text" value="172.22.1.15"/>	<input type="text" value="172.22.1.0"/>	<input type="text" value="255.255.255.0"/>
SAP-HANA		
	IP Address	
Controller A	<input type="text" value="172.22.1.16"/>	
Controller B	<input type="text" value="172.22.1.17"/>	

Figure 65 – Nimble Support Interfaces

Nimble Storage – Initiator Groups and used WWPNs

This configuration is an example.

Initiator Group	Initiators
<input type="checkbox"/> hana01	2
<input type="checkbox"/> hana02	2
<input type="checkbox"/> hana03	2
<input type="checkbox"/> hana04	2
<input type="checkbox"/> nodenfs01	2
<input type="checkbox"/> nodenfs02	2

Figure 66 – Host Initiator Groups

General			WWN Initiator Blocks	Initiators	Faults	Events
Filter Export Print						
Name	Assigned	Assigned To				
Initiator 20:00:00:25:B5:AA:AA:00	yes	org-root/ls-nodenfs01/fc-HBA-A				
Initiator 20:00:00:25:B5:AA:AA:01	yes	org-root/ls-nodenfs02/fc-HBA-A				
Initiator 20:00:00:25:B5:AA:AA:02	yes	org-root/ls-hana01/fc-HBA-A				
Initiator 20:00:00:25:B5:AA:AA:03	yes	org-root/ls-hana02/fc-HBA-A				
Initiator 20:00:00:25:B5:AA:AA:04	yes	org-root/ls-hana03/fc-HBA-A				
Initiator 20:00:00:25:B5:AA:AA:05	yes	org-root/ls-hana04/fc-HBA-A				
Initiator 20:00:00:25:B5:AA:AA:06	no					

Figure 67 – VSAN A – Nimble WWN Initiators

General			WWN Initiator Blocks	Initiators	Faults	Events
Filter Export Print						
Name	Assigned	Assigned To				
Initiator 20:00:00:25:B5:BB:BB:00	yes	org-root/ls-nodenfs01/fc-HBA-B				
Initiator 20:00:00:25:B5:BB:BB:01	yes	org-root/ls-nodenfs02/fc-HBA-B				
Initiator 20:00:00:25:B5:BB:BB:02	yes	org-root/ls-hana01/fc-HBA-B				
Initiator 20:00:00:25:B5:BB:BB:03	yes	org-root/ls-hana02/fc-HBA-B				
Initiator 20:00:00:25:B5:BB:BB:04	yes	org-root/ls-hana03/fc-HBA-B				
Initiator 20:00:00:25:B5:BB:BB:05	yes	org-root/ls-hana04/fc-HBA-B				
Initiator 20:00:00:25:B5:BB:BB:06	no					

Figure 68 – VSAN B – Nimble WWN Initiators

For Failover, HANA- Data and Log LUNs are exported to all HANA Initiators. This means each HANA Node can access all HANA Data and Log LUNs (required for failover). SAN Zoning must not be adjusted. Example for HANA02 Data LUN:

Initiator Group
hana02
hana01
hana03

Figure 69 – Initiator Group – Volume Assignment

Nimble Storage – Volumes

Please follow the SAP HANA installation guide and the Cisco SAP HANA TDI whitepaper for the Volume sizing and layout. For a 4 Node Scale-out with 256 GB RAM it could look like this:

Volumes					Space	Performance
New Volume...		View	Volumes + Replicas	Volumes: 6 Total Usage: 34.12 GB Free: 22.73 TB		
Volume	Size	Volume Usage	Snapshot Usage	Total Usage		
hana01-boot	100.0 GB	5.69 GB	0 B	5.69 GB		
hana02-boot	100.0 GB	5.69 GB	0 B	5.69 GB		
hana03-boot	100.0 GB	5.69 GB	0 B	5.69 GB		
hana04-boot	100.0 GB	5.69 GB	0 B	5.69 GB		
nodens01-boot	100.0 GB	5.66 GB	6.84 MB	5.67 GB		
nodens02-boot	100.0 GB	5.69 GB	0 B	5.69 GB		

Figure 70 – Nimble Storage Boot Volumes

OS installation

Please follow the Cisco SAP HANA TDI whitepaper instructions.

NOTE: Please make sure to have the boot LUN during the installation presented to the server only as a single LUN without any redundancy and adjust the zoning later.

When the OS is installed from a plain SLES or RHEL installation media please update the OS to the necessary kernel and patch level required by the SAP HANA revision to be installed.

OS configuration

This OS configuration is provided as an example in Appendix B.

Multipathing /etc/multipath.conf

```
defaults {
    user_friendly_names yes
}
blacklist {
    devnode "^(ram|raw|loop|fd|md|dm-|sr|scd|st)[0-9]*"
    devnode "^hd[a-z][[0-9]*]"
    device {
        vendor "*"
        product "*"
    }
}
blacklist_exceptions {
    device {
        vendor "Nimble"
        product "Server"
    }
}
devices {
    device {
        vendor "Nimble"
        product "Server"
        no_path_retry 20
        rr_weight priorities
    }
}
```

```

path_grouping_policy group_by_prio
rr_min_io 20
failback 10
path_selector "round-robin 0"
path_checker "tur"
prio "alua"
}
}

```

Generate SSH Keys and exchange with all other HANA nodes. This facilitates automation of updates and other management tasks.

```

172.22.1.43 - PuTTY
linux:/etc/multipath # ssh-keygen -b 2048
Generating public/private rsa key pair.
Enter file in which to save the key (/root/.ssh/id_rsa):
/root/.ssh/id_rsa already exists.
Overwrite (y/n)? y
Enter passphrase (empty for no passphrase):
Enter same passphrase again:
Your identification has been saved in /root/.ssh/id_rsa.
Your public key has been saved in /root/.ssh/id_rsa.pub.
The key fingerprint is:
38:62:fc:9c:66:05:45:d6:bc:ab:6e:04:53:fa:89:a9 [MD5] root@linux
The key's randomart image is:
+--[ RSA 2048 ]-----+
|      .+o      |
|      o.o      |
|      .o .     |
|      .+o .    |
|      + o*S.   |
|      .+o++ .  |
|      .*. .    |
|      Eo o     |
|      o        |
+---[ MD5 ]-----+
linux:/etc/multipath # ssh-copy-id -i /root/.ssh/id_rsa.pub hana02
The authenticity of host 'hana02 (172.22.1.41)' can't be established.
ECDSA key fingerprint is 40:07:d6:c4:58:15:27:df:59:36:21:31:16:84:b1:0c [MD5].
Are you sure you want to continue connecting (yes/no)? yes
/usr/bin/ssh-copy-id: INFO: attempting to log in with the new key(s), to filter
out any that are already installed
/usr/bin/ssh-copy-id: INFO: 1 key(s) remain to be installed -- if you are prompt
ed now it is to install the new keys
Password:
Password:

Number of key(s) added: 1

Now try logging into the machine, with: "ssh 'hana02'"
and check to make sure that only the key(s) you wanted were added.

linux:/etc/multipath # █

```

Figure 71 – Generate ssh Keys

Multipathing

This configuration shows the four hosts configured for the TDI testing.

```
172.22.1.43 - PuTTY
hana04:~# multipath -ll
mpathd (27671f7e9091a44856c9ce9001a10797a) dm-4 Nimble,Server
size=80G features='1 queue_if_no_path' hwhandler='0' wp=rw
|+- policy='round-robin 0' prio=50 status=active
| |- 0:0:0:3 sdf 8:80 active ready running
| |- 0:0:1:3 sdn 8:208 active ready running
|+- policy='round-robin 0' prio=1 status=enabled
| |- 1:0:0:3 sdi 8:128 active ghost running
| |- 1:0:1:3 sdp 8:240 active ghost running
mpathc (2e9022e98450ebf646c9ce9001a10797a) dm-3 Nimble,Server
size=270G features='1 queue_if_no_path' hwhandler='0' wp=rw
|+- policy='round-robin 0' prio=50 status=active
| |- 0:0:0:2 sdd 8:48 active ready running
| |- 0:0:1:2 sdl 8:176 active ready running
|+- policy='round-robin 0' prio=1 status=enabled
| |- 1:0:0:2 sdg 8:96 active ghost running
| |- 1:0:1:2 sdo 8:224 active ghost running
mpathb (2184cec2ff8f133516c9ce9001a10797a) dm-0 Nimble,Server
size=780G features='1 queue_if_no_path' hwhandler='0' wp=rw
|+- policy='round-robin 0' prio=50 status=active
| |- 0:0:0:1 sdb 8:16 active ready running
| |- 0:0:1:1 sdj 8:144 active ready running
|+- policy='round-robin 0' prio=1 status=enabled
| |- 1:0:0:1 sde 8:64 active ghost running
| |- 1:0:1:1 sdm 8:192 active ghost running
mpatha (28bd9eb132ae684e46c9ce9001a10797a) dm-1 Nimble,Server
size=100G features='1 queue_if_no_path' hwhandler='0' wp=rw
|+- policy='round-robin 0' prio=50 status=active
| |- 0:0:0:0 sda 8:0 active ready running
| |- 0:0:1:0 sdh 8:112 active ready running
|+- policy='round-robin 0' prio=1 status=enabled
| |- 1:0:0:0 sdc 8:32 active ghost running
| |- 1:0:1:0 sdk 8:160 active ghost running
hana04:~#
```

Figure 72 - Multipathing Setup

HANA folders

Create SAP HANA related folders (/hana/data, /hana/log and /hana/backup) with the SuSE Logical Volume Manager (LVM). Create volume groups and format the logical volumes with XFS.

Mount NFS share /hana/shared.

```

172.22.143 - PuTTY
hana04:~ # mkdir /backup
hana04:~ # ls /hana/
data  log
hana04:~ # mkdir /hana/shared
hana04:~ # mount -t nfs nodens-st:/srv/nfs-hanashared/hanashared /hana/shared/
hana04:~ # mount
rootfs on / type rootfs (rw)
udev on /dev type tmpfs (rw,relatime,nr_inodes=0,mode=755)
tmpfs on /dev/shm type tmpfs (rw,relatime)
/dev/mapper/28bd9eb132ae684e46c9ce9001a10797a_part1 on / type ext3 (rw,relatime,errors=continue,user_xattr,acl,barrier=1,data=ordered)
proc on /proc type proc (rw,relatime)
sysfs on /sys type sysfs (rw,relatime)
devpts on /dev/pts type devpts (rw,relatime,gid=5,mode=620,ptmxmode=000)
debugfs on /sys/kernel/debug type debugfs (rw,relatime)
fusectl on /sys/fs/fuse/connections type fusectl (rw,relatime)
securityfs on /sys/kernel/security type securityfs (rw,relatime)
rpc_pipefs on /var/lib/nfs/rpc_pipefs type rpc_pipefs (rw,relatime)
none on /proc/sys/fs/binfmt_misc type binfmt_misc (rw,relatime)
none on /var/lib/ntp/proc type proc (ro,nosuid,nodev,relatime)
nodens-st:/srv/nfs-hanashared/hanashared on /hana/shared type nfs (rw,relatime,vers=3,rsize=1048576,wsize=1048576,namlen=255,hard,proto=tcp,timeo=600,retrans=2,sec=sys,mountaddr=172.22.110.20,mountvers=3,mountport=58806,mountproto=udp,local_lock=none,addr=172.22.110.20)
hana04:~ #

```

Figure 73 – Mount NFS Share

Add NFS share to /etc/fstab

```

172.22.143 - PuTTY
hana04:~ # cat /etc/fstab
UUID=5ff0ae0f-eb4c-4715-9ece-b2c15ca76fd0 / ext3 acl,user_xattr 1 1
proc /proc proc defaults 0 0
sysfs /sys sysfs noauto 0 0
debugfs /sys/kernel/debug debugfs noauto 0 0
usbfs /proc/bus/usb usbfs noauto 0 0
devpts /dev/pts devpts mode=0620,gid=5 0 0
/swap-001 swap swap defaults 0 0
nodens-st:/srv/nfs-hanashared/hanashared /hana/shared nfs rsize=1048576,wsize=1048576 0 0
hana04:~ #

```

Figure 74 – Configure fstab

Summary

This document provides an overview of the SAP HANA Solution on SmartStack. This guide follows best practices from Nimble Storage, Cisco, and SAP for construction of the compute, network and storage elements needed for a TDI tested solution to support SAP HANA.

Using the setup examples provided in this guide and staying with the vendor defined solutions for SmartStack san SAP HANA TDI configurations, you should be able to construct a similar solution specific to your own environment needs.

This solution guide is not intended to cover every possible configuration setup or detail. For more information, contact your local integrator or vendor for more details.

Appendix A – VSAN Database Configuration

```
vsan database
  vsan 10 name "Fabric-A"
fcdomain fcid database
  vsan 10 wwn 20:1f:54:7f:ee:87:64:c0 fcid 0xe20000 dynamic
  vsan 10 wwn 20:20:54:7f:ee:87:64:c0 fcid 0xe20020 dynamic
  vsan 10 wwn 56:c9:ce:90:f0:8b:97:02 fcid 0xe20040 dynamic
  vsan 10 wwn 56:c9:ce:90:f0:8b:97:04 fcid 0xe20060 dynamic
  vsan 10 wwn 20:00:00:25:b5:aa:aa:00 fcid 0xe20001 dynamic
  vsan 10 wwn 20:00:00:25:b5:aa:aa:01 fcid 0xe20021 dynamic
  vsan 10 wwn 20:00:00:25:b5:aa:aa:02 fcid 0xe20002 dynamic
  vsan 10 wwn 20:00:00:25:b5:aa:aa:03 fcid 0xe20022 dynamic
  vsan 10 wwn 20:00:00:25:b5:aa:aa:04 fcid 0xe20003 dynamic
  vsan 10 wwn 20:00:00:25:b5:aa:aa:05 fcid 0xe20023 dynamic
  vsan 10 wwn 20:00:00:25:b5:aa:aa:06 fcid 0xe20004 dynamic
  vsan 10 wwn 20:00:00:25:b5:aa:aa:07 fcid 0xe20005 dynamic
  vsan 10 wwn 20:00:00:25:b5:aa:aa:08 fcid 0xe20006 dynamic
  vsan 10 wwn 20:00:00:25:b5:aa:aa:09 fcid 0xe20007 dynamic
  vsan 10 wwn 20:00:00:25:b5:aa:aa:0b fcid 0xe20024 dynamic
  vsan 10 wwn 20:00:00:25:b5:aa:aa:0c fcid 0xe20008 dynamic
  vsan 10 wwn 20:00:00:25:b5:aa:aa:0d fcid 0xe20025 dynamic
  vsan 10 wwn 20:00:00:25:b5:aa:aa:0a fcid 0xe20009 dynamic
  vsan 1 wwn 56:c9:ce:90:f0:8b:97:03 fcid 0x650000 dynamic
  vsan 1 wwn 56:c9:ce:90:f0:8b:97:01 fcid 0x650020 dynamic
[...]
!Full Zone Database Section for vsan 10
fcalias name Nimble_Controller-A_Port1 vsan 10
  member pwwn 56:c9:ce:90:f0:8b:97:04
fcalias name Nimble_Controller-A_Port2 vsan 10
  member pwwn 56:c9:ce:90:f0:8b:97:02
fcalias name nodenfs01_hba-a vsan 10
  member pwwn 20:00:00:25:b5:aa:aa:00
fcalias name nodenfs02_hba-a vsan 10
  member pwwn 20:00:00:25:b5:aa:aa:01
fcalias name hana01_hba-a vsan 10
  member pwwn 20:00:00:25:b5:aa:aa:02
fcalias name hana02_hba-a vsan 10
  member pwwn 20:00:00:25:b5:aa:aa:03
fcalias name hana03_hba-a vsan 10
  member pwwn 20:00:00:25:b5:aa:aa:04
fcalias name hana04_hba-a vsan 10
  member pwwn 20:00:00:25:b5:aa:aa:05
fcalias name drx-test_hba-a vsan 10
  member pwwn 20:00:00:25:b5:aa:aa:06
fcalias name nodenfs01_hba-c vsan 10
  member pwwn 20:00:00:25:b5:aa:aa:07
fcalias name nodenfs02_hba-c vsan 10
  member pwwn 20:00:00:25:b5:aa:aa:06
fcalias name esxi01_hba-a vsan 10
  member pwwn 20:00:00:25:b5:aa:aa:08
fcalias name esxi02_hba-a vsan 10
  member pwwn 20:00:00:25:b5:aa:aa:09
fcalias name Nimble_Controller-A_Port3 vsan 10
```

```

    member pwwn 56:c9:ce:90:f0:8b:97:03
fcalias name Nimble_Controller-A_Port4 vsan 10
    member pwwn 56:c9:ce:90:f0:8b:97:01
fcalias name hana05_hba-a vsan 10
    member pwwn 20:00:00:25:b5:aa:aa:0a
fcalias name hana06_hba-a vsan 10
    member pwwn 20:00:00:25:b5:aa:aa:0b
fcalias name hana07_hba-a vsan 10
    member pwwn 20:00:00:25:b5:aa:aa:0c
fcalias name hana08_hba-a vsan 10
    member pwwn 20:00:00:25:b5:aa:aa:0d
zone name z_nodenfs01 vsan 10
    member fcalias Nimble_Controller-A_Port1
    member fcalias Nimble_Controller-A_Port2
    member fcalias nodenfs01_hba-a
    member fcalias nodenfs01_hba-c
zone name z_nodenfs02 vsan 10
    member fcalias Nimble_Controller-A_Port1
    member fcalias Nimble_Controller-A_Port2
    member fcalias nodenfs02_hba-a
    member fcalias nodenfs02_hba-c
zone name z_hana01_hba-a vsan 10
    member fcalias Nimble_Controller-A_Port1
    member fcalias Nimble_Controller-A_Port2
    member fcalias hana01_hba-a
    member fcalias Nimble_Controller-A_Port3
    member fcalias Nimble_Controller-A_Port4
zone name z_hana02_hba-a vsan 10
    member fcalias Nimble_Controller-A_Port1
    member fcalias Nimble_Controller-A_Port2
    member fcalias hana02_hba-a
    member fcalias Nimble_Controller-A_Port3
    member fcalias Nimble_Controller-A_Port4
zone name z_hana03_hba-a vsan 10
    member fcalias Nimble_Controller-A_Port1
    member fcalias Nimble_Controller-A_Port2
    member fcalias hana03_hba-a
    member fcalias Nimble_Controller-A_Port3
    member fcalias Nimble_Controller-A_Port4
zone name z_hana04_hba-a vsan 10
    member fcalias Nimble_Controller-A_Port1
    member fcalias Nimble_Controller-A_Port2
    member fcalias hana04_hba-a
    member fcalias Nimble_Controller-A_Port3
    member fcalias Nimble_Controller-A_Port4
zone name z_drx-test_hba-a vsan 10
    member fcalias Nimble_Controller-A_Port1
    member fcalias Nimble_Controller-A_Port2
    member fcalias drx-test_hba-a
zone name esxi01_hba-a vsan 10
    member fcalias Nimble_Controller-A_Port1
    member fcalias Nimble_Controller-A_Port2
    member fcalias esxi01_hba-a
zone name esxi02_hba-a vsan 10

```

```

member fcalias Nimble_Controller-A_Port1
member fcalias Nimble_Controller-A_Port2
member fcalias esxi02_hba-a
zone name z_hana05_hba-a vsan 10
member fcalias Nimble_Controller-A_Port1
member fcalias Nimble_Controller-A_Port2
member fcalias Nimble_Controller-A_Port3
member fcalias Nimble_Controller-A_Port4
member fcalias hana05_hba-a
zone name z_hana06_hba-a vsan 10
member fcalias Nimble_Controller-A_Port1
member fcalias Nimble_Controller-A_Port2
member fcalias Nimble_Controller-A_Port3
member fcalias Nimble_Controller-A_Port4
member fcalias hana06_hba-a
zone name z_hana07_hba-a vsan 10
member fcalias Nimble_Controller-A_Port1
member fcalias Nimble_Controller-A_Port2
member fcalias Nimble_Controller-A_Port3
member fcalias Nimble_Controller-A_Port4
member fcalias hana07_hba-a
zone name z_hana08_hba-a vsan 10
member fcalias Nimble_Controller-A_Port1
member fcalias Nimble_Controller-A_Port2
member fcalias Nimble_Controller-A_Port3
member fcalias Nimble_Controller-A_Port4
member fcalias hana08_hba-a
zoneset name zSet_Fabric-A vsan 10
member z_nodenfs01
member z_nodenfs02
member z_hana01_hba-a
member z_hana02_hba-a
member z_hana03_hba-a
member z_hana04_hba-a
member z_drx-test_hba-a
member esxi01_hba-a
member esxi02_hba-a
member z_hana05_hba-a
member z_hana06_hba-a
member z_hana07_hba-a
member z_hana08_hba-a
zoneset activate name zSet_Fabric-A vsan 10

```

Appendix B – OS Configuration

Network configuration for Node hana04 (example) in /etc/sysconfig/network/ifcfg-ethx:

Client Network (eth0):

```
BOOTPROTO='static'  
BROADCAST='172.22.1.255'  
ETHTOOL_OPTIONS=''  
IPADDR='172.22.1.43'  
MTU='1500'  
NAME='VIC Ethernet NIC'  
NETWORK='172.22.1.0'  
REMOTE_IPADDR=''  
STARTMODE='auto'  
USERCONTROL='no'  
NETMASK='255.255.255.0'
```

Storage Network (eth1):

```
BOOTPROTO='static'  
BROADCAST='172.22.220.255'  
ETHTOOL_OPTIONS=''  
IPADDR='172.22.220.43'  
MTU='9000'  
NAME='VIC Ethernet NIC'  
NETWORK='172.22.220.0'  
REMOTE_IPADDR=''  
STARTMODE='auto'  
USERCONTROL='no'  
NETMASK='255.255.255.0'
```

Internal Network (eth2):

```
BOOTPROTO='static'  
BROADCAST='172.22.110.255'  
ETHTOOL_OPTIONS=''  
IPADDR='172.22.110.43'  
MTU='9000'  
NAME='VIC Ethernet NIC'  
NETWORK='172.22.110.0'  
REMOTE_IPADDR=''  
STARTMODE='auto'  
USERCONTROL='no'  
NETMASK='255.255.255.0'
```

Default Gateway in /etc/sysconfig/network/routes

```
default 172.22.1.1 - -
```

Set Hostname in /etc/HOSTNAME

```
hana04
```

/etc/hosts content (distributed to all hana nodes):

```
127.0.0.1      localhost
172.22.1.40   hana01
172.22.1.41   hana02
172.22.1.42   hana03
172.22.1.43   hana04
172.22.1.30   nodenfs01
172.22.1.31   nodenfs02
172.22.1.10   ucs6248
172.22.1.15   nimble-storage
172.22.1.2    n5k-a
172.22.1.3    n5k-b

172.22.110.20 nodenfs-st
172.22.110.30 nodenfs01-st
172.22.110.31 nodenfs02-st

172.22.110.40 hana01-st
172.22.110.41 hana02-st
172.22.110.42 hana03-st
172.22.110.43 hana04-st

172.22.220.40 hana01-int
172.22.220.41 hana02-int
172.22.220.42 hana03-int
172.22.220.43 hana04-int

192.53.103.108 ptbtime1.ptb.de

# special IPv6 addresses
::1          host ipv6host ipv6-loopback

fe00::0     ipv6net

ff00::0     ipv6-mcastprefix
ff02::1     ipv6-allnodes
ff02::2     ipv6-allrouters
ff02::3     ipv6-allhosts
```



Nimble Storage, Inc.

211 River Oaks Parkway, San Jose, CA 95134

Tel: 877-364-6253; 408-432-9600 | www.nimblestorage.com | info@nimblestorage.com

© 2015 Nimble Storage, Inc. . Nimble Storage, InfoSight, CASL, SmartStack, and NimbleConnect are trademarks or registered trademarks of Nimble Storage, Inc. All other trademarks are the property of their respective owners. STSK-HANA-0415